



## **Asbestos Assessment**

Father Kryan Kennedy  
90 Mulberry Street, Hamilton, ON,  
L8L 1B5

Prepared for:

**Hamilton-Wentworth Catholic  
District School Board**

90 Mulberry Street  
Hamilton, Ontario, L8N 3R9

August 31, 2023

Pinchin File: 320582.004



**Asbestos Assessment**

Father Kryan Kennedy, 90 Mulberry Street, Hamilton, ON, L8L 1B5  
Hamilton-Wentworth Catholic District School Board

August 31, 2023  
Pinchin File: 320582.004

**Issued to:** Hamilton-Wentworth Catholic District School Board  
**Issued on:** August 31, 2023  
**Pinchin File:** 320582.004  
**Issuing Office:** Hamilton, ON  
**Primary Contact:** Emily Balfour, Project Manager, [ebalfour@pinchin.com](mailto:ebalfour@pinchin.com)

---

Author:

---

Emily Balfour  
Project Manager  
365.889.5147  
[ebalfour@pinchin.com](mailto:ebalfour@pinchin.com)

Reviewer:

---

Damian Palus, C.E.T.  
Operations Manager  
289.678.0694  
[dpalus@pinchin.com](mailto:dpalus@pinchin.com)



## **EXECUTIVE SUMMARY**

Hamilton-Wentworth Catholic District School Board (Client) retained Pinchin Ltd. (Pinchin) to conduct an asbestos building materials assessment of Father Kryan Kennedy located at 90 Mulberry Street, Hamilton, ON, L8L 1B5.

The objectives of the assessment were to document the locations of asbestos building materials, evaluate their condition and develop corrective action plans as required for the purposes of long-term management. The results of this assessment are not intended for construction, renovation, demolition or project tendering purposes.

## **SUMMARY OF RECOMMENDATIONS**

The following is a summary of significant recommendations; refer to the body of the report for detailed recommendations:

1. Maintain the Asbestos Management Program (AMP)
2. Perform a re-assessment of asbestos materials on an annual basis.
3. Perform a pre-construction assessment and remove all ACM prior to alteration or maintenance work if ACM may be disturbed by the work.
4. Follow appropriate safe work procedures when handling or disturbing asbestos.
5. Sample any presumed ACM prior to alteration or maintenance work if presumed ACM may be disturbed by the work.
6. Update the asbestos inventory report upon completion of any abatement and removal of asbestos-containing materials.

*This Executive Summary is subject to the same standard limitations as contained in the report and must be read in conjunction with the entire report.*



**TABLE OF CONTENTS**

1.0 INTRODUCTION AND SCOPE ..... 1  
    1.1 Scope of Assessment ..... 1  
2.0 METHODOLOGY ..... 1  
3.0 BACKGROUND INFORMATION ..... 1  
    3.1 Building Year of Construction and Additions ..... 1  
    3.2 Existing Reports ..... 1  
    3.3 Inaccessible Locations ..... 2  
4.0 FINDINGS ..... 2  
    4.1 Excluded Asbestos Materials ..... 2  
    4.2 Summary of Building Materials ..... 3  
5.0 RECOMMENDATIONS ..... 5  
    5.1 General ..... 5  
    5.2 Remedial Work ..... 6  
    5.3 On-going Management and Maintenance ..... 6  
6.0 TERMS AND LIMITATIONS ..... 6  
7.0 REFERENCES ..... 7

**APPENDICES**

APPENDIX I Drawings  
APPENDIX II Asbestos Analytical Certificates  
APPENDIX III Methodology  
APPENDIX IV Location List  
APPENDIX V Summary Report / Sample Log  
APPENDIX VI HMIS All Data Report



## 1.0 INTRODUCTION AND SCOPE

Hamilton-Wentworth Catholic District School Board (Client) retained Pinchin Ltd. (Pinchin) to conduct an asbestos building materials assessment of Father Kryan Kennedy located at 90 Mulberry Street, Hamilton, ON, L8L 1B5.

Pinchin performed the assessment on July 20, 2023.

The objectives of the assessment were to document the locations of asbestos building materials, evaluate their condition and develop corrective action plans as required. This assessment is only to be used for the purposes of long-term management and routine maintenance. The results of this assessment are not to be used for construction, renovation, demolition, or project tendering purposes.

### 1.1 Scope of Assessment

The assessment was performed to establish the location and type of asbestos building materials incorporated in the structure(s) and its finishes. The **assessed area** consisted of all parts of the building, excluding the roof.

## 2.0 METHODOLOGY

Pinchin conducted a room-by-room assessment (rooms, corridors, service areas, exterior, etc.) to identify the asbestos-containing building materials as defined in the scope.

The assessment was limited to non-intrusive testing. Concealed spaces such as those above solid ceilings and within shafts and pipe chases were accessed via existing access panels only. Demolition of walls, solid ceilings, structural items, interior finishes or exterior building finishes, to determine the presence of concealed materials was not conducted.

For further details on the methodology including test methods, refer to Appendix III.

## 3.0 BACKGROUND INFORMATION

### 3.1 Building Year of Construction and Additions

Item	Details
Year of Construction	1965

### 3.2 Existing Reports

Pinchin previously prepared the following report, which has been reviewed as part of this assessment:

- Asbestos Reassessment Report, Father Kryan Kennedy, August 2022, Pinchin File No. 303992.004.



### **3.3 Inaccessible Locations**

Inaccessible locations (rooms or areas), if any, are indicated in the Location List Report in Appendix IV. These locations within the assessed area were not accessible to the surveyor and are therefore not included in the report.

## **4.0 FINDINGS**

The following section summarizes the findings of the assessment and provides a general description of the asbestos-containing materials (ACM) identified and their locations. For details on approximate quantities, condition, friability, accessibility and locations of asbestos materials; refer to the Asbestos Material Summary Report and All Data Report in Appendix V and VI.

### **4.1 Excluded Asbestos Materials**

A number of materials which might contain asbestos were not sampled during this assessment due to limitations in scope and methodology. Where present, these materials are assumed to contain asbestos until otherwise proven by sampling and analysis. These materials are not shown on the drawings in Appendix I. Excluded materials presumed to contain asbestos include:



- Roofing felts and tar, mastics
- Floor levelling compound
- Elevator and lift brakes
- Electrical components
- Mechanical packing, ropes and gaskets
- Vermiculite
- Adhesives and duct mastics
- Caulking and putties
- Fibre-reinforced paints and coatings
- Paper products
- Fire resistant doors
- Stucco, plaster or other cementitious parge coatings
- Vibration dampers on HVAC equipment
- Terrazzo
- Ropes and gaskets in cast-iron bell and spigot joints
- Sealants on pipe threads


## 4.2 Summary of Building Materials

This section includes a summary of building materials that have been confirmed asbestos-containing by sample analysis, presumed asbestos-containing by visual identification, or confirmed non-asbestos by sampling or based on the manufacture date and known end of use of asbestos in these products.




The locations of samples from historical assessments performed by Pinchin, have been included on the drawings.

Appendix II presents the asbestos bulk sample analytical results.

Material and Application	Asbestos Type	Photo
<p>Texture finish is present on ceilings in the Hearing Room (Location 1001) and the Boardroom (Location 1002).</p> <p>Overspray from the asbestos-containing texture coat is presumed to be present above the ceiling at light fixture openings, on the deck, ducts and within junction boxes.</p>	Chrysotile	
<p>Non-asbestos texture finish is present on drywall walls in the Chapel (Location 3004).</p>	None	
<p>Parging cement is present on pipe fittings (elbows, valves, tees, hangers etc.).</p> <p>Pipes insulated with asbestos-containing insulations may be present in inaccessible spaces such as above solid ceilings, in chases, in column enclosures and within shafts</p>	Chrysotile	
<p>Remaining pipes are either uninsulated or insulated with non-asbestos fibreglass or elastomeric insulation (Armaflex).</p>	None	

Material and Application	Asbestos Type	Photo
Ducts are either uninsulated or insulated with non-asbestos fibreglass (foil-faced or canvas).	None	
Mechanical equipment is either uninsulated or insulated with non-asbestos fibreglass.	None	
12"x12" glued-on ceiling tiles, with a fissured pattern are present.	Amosite	
Remaining ceiling tiles are non-asbestos from previous sampling, presumed to be non-asbestos based on the date of manufacture determined from the date stamp applied to the top of the tiles and the age of the materials determined from the age of the building.	None	
Textured, rough, and smooth plaster is present on walls, columns and ceilings.	None	
Drywall joint compound is present on wall and ceiling finishes.	None	



Material and Application	Asbestos Type	Photo
<p>Vinyl sheet flooring is presumed to be non-asbestos based on the date of installation (post-2020)</p> <p>Mastic under non-asbestos sheet flooring is presumed to contain asbestos until further sampling is performed.</p>	<p>None (flooring) Presumed (mastic)</p>	
<p>Vinyl floor tiles, various colours, are present.</p>	<p>Presumed (tile) Presumed (mastic)</p>	
<p>Gold sink undercoating is present.</p>	<p>Presumed</p>	

**5.0 RECOMMENDATIONS**

**5.1 General**

Perform a detailed intrusive assessment prior to maintenance work, building renovation or demolition operations. The assessment should include destructive testing (e.g., coring and/or removal of building finishes and components), and other hazardous materials (lead, mercury, PCBs, mould, etc.) and materials not tested in this study (e.g., roofing materials, caulking, mastics).



## **5.2 Remedial Work**

No remedial work is recommended.

## **5.3 On-going Management and Maintenance**

The following recommendations are made regarding on-going management and maintenance work involving the asbestos materials identified.

Maintain the Asbestos Management Program (AMP).

Perform a reassessment of asbestos materials on an annual basis.

Remove asbestos-containing materials (ACM) prior to alteration or maintenance work if ACM may be disturbed by the work. Follow appropriate asbestos precautions for the classification of work being performed.

Sample presumed ACM prior to alteration or maintenance work if the presumed ACM may be disturbed by the work.

Update the asbestos inventory report upon completion of any abatement and removal of asbestos-containing materials.

## **6.0 TERMS AND LIMITATIONS**

This work was performed subject to the Terms and Limitations presented or referenced in the proposal for this project.

Information provided by Pinchin is intended for Client use only. Pinchin will not provide results or information to any party unless disclosure by Pinchin is required by law. Any use by a third party of reports or documents authored by Pinchin or any reliance by a third party on or decisions made by a third party based on the findings described in said documents, is the sole responsibility of such third parties. Pinchin accepts no responsibility for damages suffered by any third party as a result of decisions made or actions conducted. No other warranties are implied or expressed.



## 7.0 REFERENCES

The following legislation and documents were referenced in completing the assessment and this report:

1. Asbestos on Construction Projects and in Buildings and Repair Operations, Ontario Regulation 278/05.
2. Designated Substances, Ontario Regulation 490/09.
3. Ministry of the Environment Regulation, R.R.O. 1990 Reg. 347 as amended.

\\PIN-HAM-FS02\job\320000s\0320582.000 HWCD SB, Various 2023 Projects, ASB, CONS\0320582.004 HWCD SB, All Sites, 2023, ASB, ASSMT\Deliverables\Father Kryan Kennedy\Deliverables\320582.004 Asbestos Asmnt Report Father Kryan Kennedy HWCD SB Aug 31 2023.docx

Template: Master Report for Asbestos Assessment, HAZ, July 29, 2021

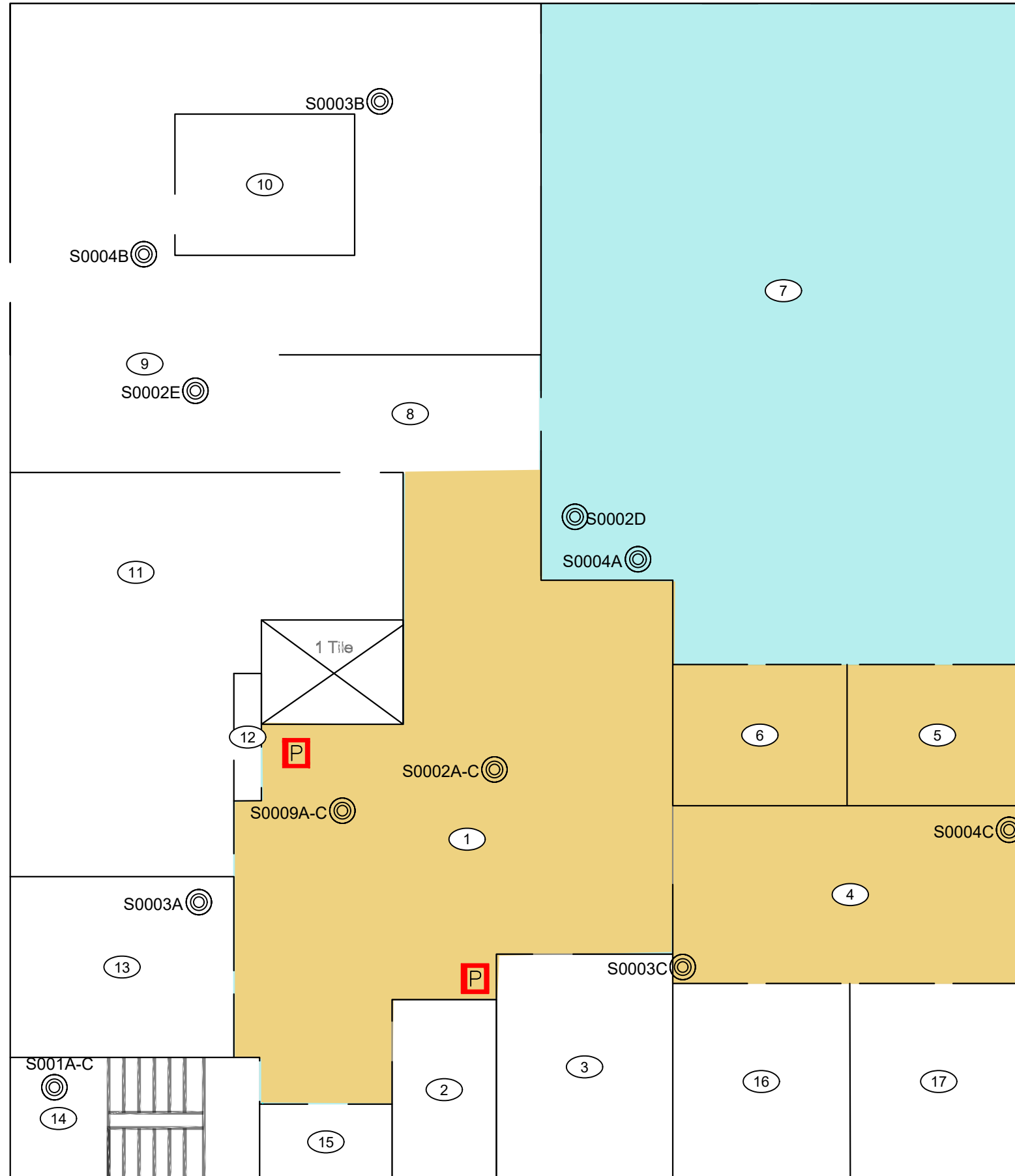
**APPENDIX I**  
**Drawings**

PIPES INSULATED WITH ASBESTOS-CONTAINING INSULATIONS MAY BE PRESENT IN INACCESSIBLE SPACES SUCH AS ABOVE SOLID CEILINGS, IN CHASES, IN COLUMN ENCLOSURES AND WITHIN SHAFTS.

NOT ALL KNOWN OR SUSPECTED ASBESTOS BUILDING MATERIALS MAY BE DEPICTED ON THE DRAWING. REFER TO THE ASBESTOS REASSESSMENT REPORT FOR A COMPLETE LIST OF KNOWN AND SUSPECTED ASBESTOS BUILDING MATERIALS.

LEGEND IS COLOUR DEPENDENT. NON-COLOUR COPIES MAY ALTER INTERPRETATION.

BASE PLAN PROVIDED BY CLIENT.



905-577-6206 [www.pinchin.com](http://www.pinchin.com)

LEGEND:

- (X) LOCATION NUMBER
- (S) ASBESTOS BULK SAMPLE

ASBESTOS-CONTAINING MATERIALS:

- (P) PIPE INSULATION
- (S) SINK UNDERCOATING
- [Red diagonal lines] GLUE ON TILES
- [Blue diagonal lines] TEXTURE FINISH CEILING
- [Light blue box] VINYL FLOOR TILES AND MASTIC
- [Yellow box] MASTIC

CLIENT:



Hamilton-Wentworth  
Catholic District School Board  
*Believing, Achieving, Serving*

LOCATION:

FATHER KYRAN KENNEDY  
90 MULBERRY STREET  
HAMILTON, ONTARIO

TITLE:

ASBESTOS ASSESSMENT  
BASEMENT LEVEL

DATE:

AUGUST 2023

PROJECT #:

320582.004

DRAWN BY:

DS

CHECKED BY:

EB

SCALE:

NTS

DRAWING:

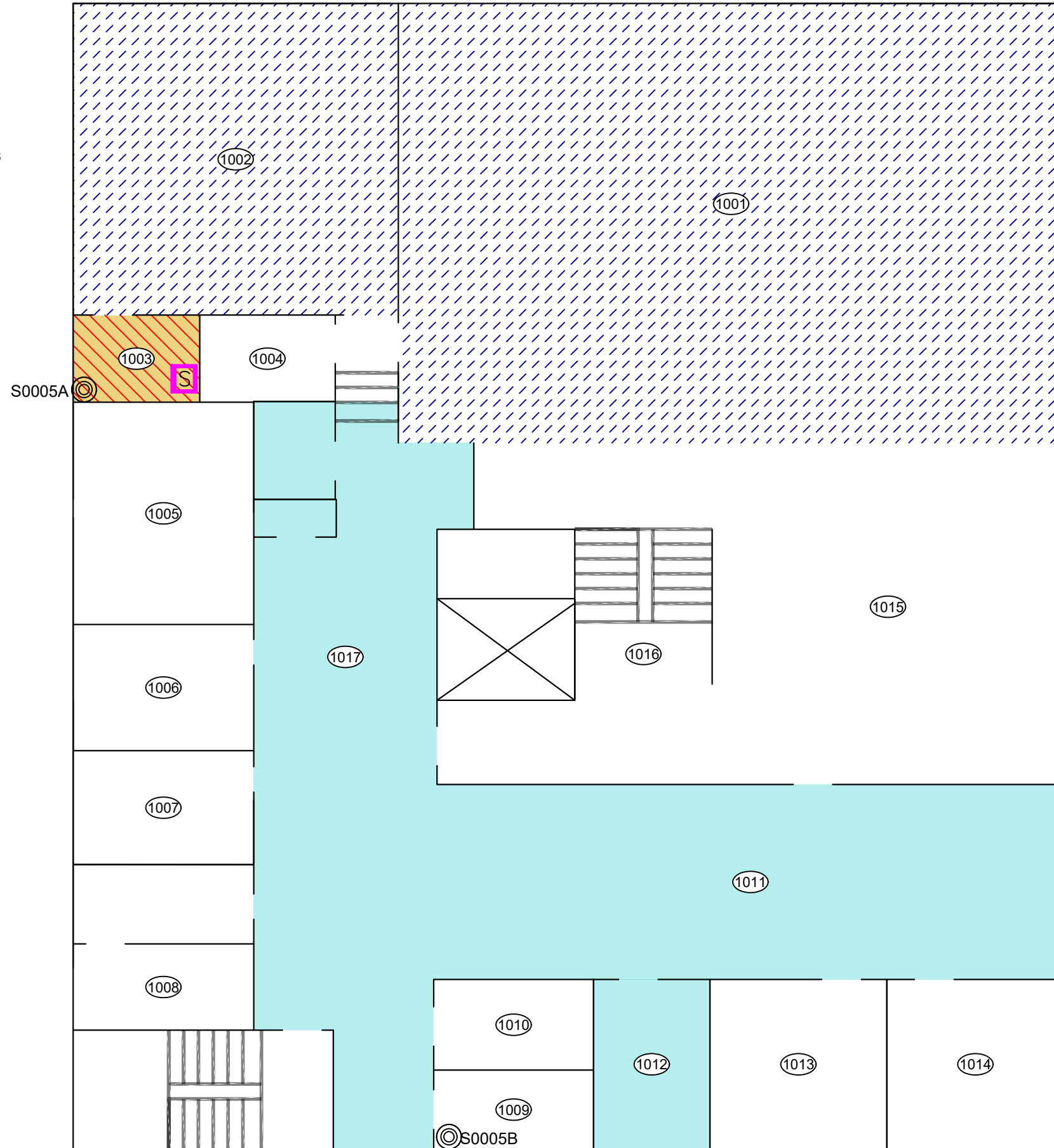
1 OF 4

PIPES INSULATED WITH ASBESTOS-CONTAINING INSULATIONS MAY BE PRESENT IN INACCESSIBLE SPACES SUCH AS ABOVE SOLID CEILINGS, IN CHASES, IN COLUMN ENCLOSURES AND WITHIN SHAFTS.

NOT ALL KNOWN OR SUSPECTED ASBESTOS BUILDING MATERIALS MAY BE DEPICTED ON THE DRAWING. REFER TO THE ASBESTOS REASSESSMENT REPORT FOR A COMPLETE LIST OF KNOWN AND SUSPECTED ASBESTOS BUILDING MATERIALS.

LEGEND IS COLOUR DEPENDENT. NON-COLOUR COPIES MAY ALTER INTERPRETATION.

BASE PLAN PROVIDED BY CLIENT.



905-577-6206

www.pinchin.com

LEGEND:

(X) LOCATION NUMBER

(⊙) ASBESTOS BULK SAMPLE

ASBESTOS-CONTAINING MATERIALS:

[P] PIPE INSULATION

[S] SINK UNDERCOATING

[Hatched] GLUE ON TILES

[Blue Hatched] TEXTURE FINISH CEILING

[Light Blue] VINYL FLOOR TILES AND MASTIC

[Yellow] MASTIC

CLIENT:



Hamilton-Wentworth  
Catholic District School Board

*Believing, Achieving, Serving*

LOCATION:

FATHER KYRAN KENNEDY  
90 MULBERRY STREET  
HAMILTON, ONTARIO

TITLE:

ASBESTOS ASSESSMENT  
FLOOR LEVEL 1

DATE:

AUGUST 2023

PROJECT # :

320582.004

DRAWN BY:

DS

DRAWING:

CHECKED BY:

EB

2 OF 4

SCALE:

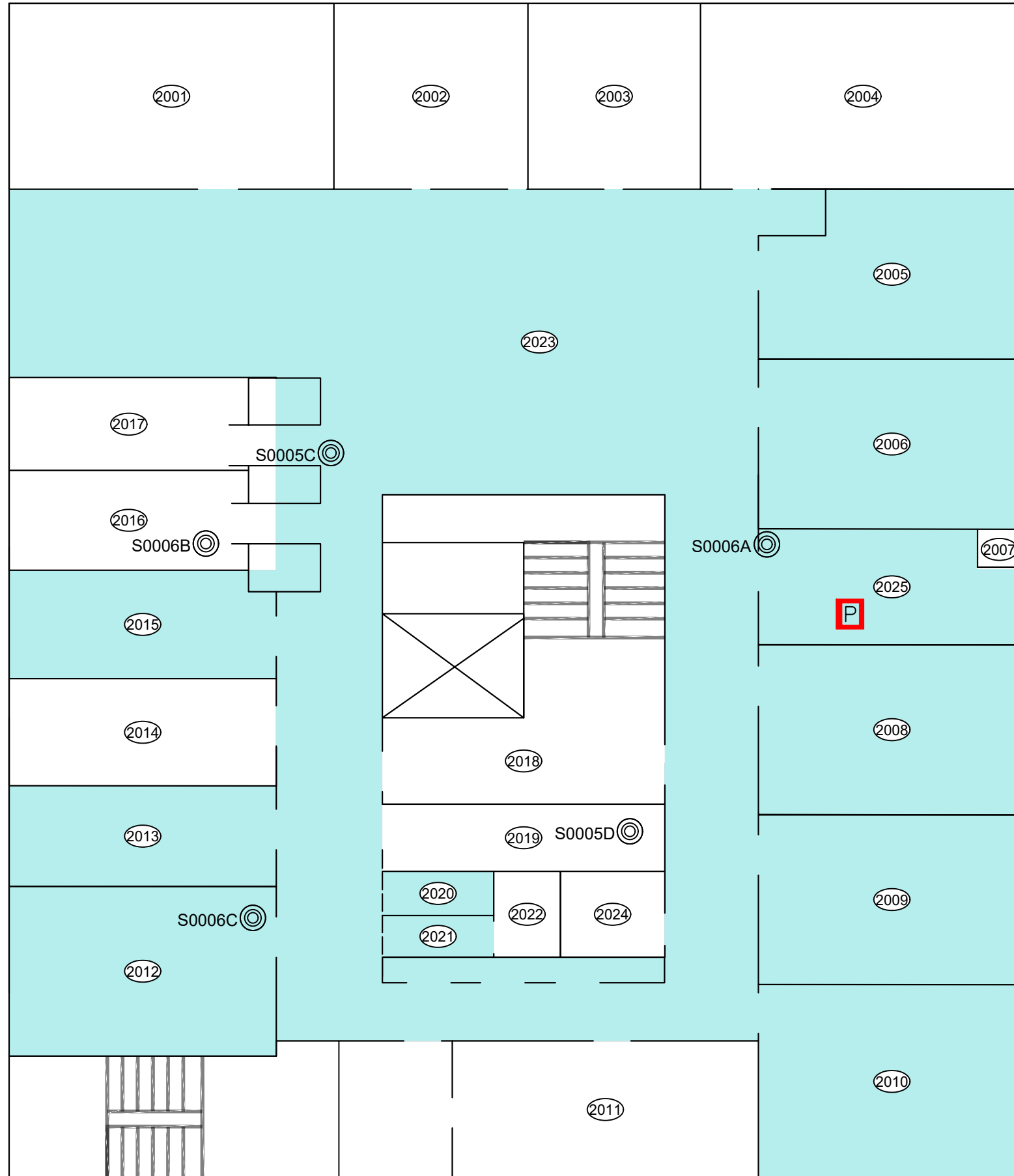
NTS

PIPES INSULATED WITH ASBESTOS-CONTAINING INSULATIONS MAY BE PRESENT IN INACCESSIBLE SPACES SUCH AS ABOVE SOLID CEILINGS, IN CHASES, IN COLUMN ENCLOSURES AND WITHIN SHAFTS.

NOT ALL KNOWN OR SUSPECTED ASBESTOS BUILDING MATERIALS MAY BE DEPICTED ON THE DRAWING. REFER TO THE ASBESTOS REASSESSMENT REPORT FOR A COMPLETE LIST OF KNOWN AND SUSPECTED ASBESTOS BUILDING MATERIALS.

LEGEND IS COLOUR DEPENDENT. NON-COLOUR COPIES MAY ALTER INTERPRETATION.

BASE PLAN PROVIDED BY CLIENT.



905-577-6206 [www.pinchin.com](http://www.pinchin.com)

LEGEND:

- (X) LOCATION NUMBER
- (C) ASBESTOS BULK SAMPLE

ASBESTOS-CONTAINING MATERIALS:

- [P] PIPE INSULATION
- [S] SINK UNDERCOATING
- [Hatched Box] GLUE ON TILES
- [Blue Hatched Box] TEXTURE FINISH CEILING
- [Light Blue Box] VINYL FLOOR TILES AND MASTIC
- [Yellow Box] MASTIC

CLIENT:



Hamilton-Wentworth  
Catholic District School Board

*Believing, Achieving, Serving*

LOCATION:

FATHER KYRAN KENNEDY  
90 MULBERRY STREET  
HAMILTON, ONTARIO

TITLE:

ASBESTOS ASSESSMENT  
FLOOR LEVEL 2

DATE:

AUGUST 2023

PROJECT # :

320582.004

DRAWN BY:

DS

DRAWING:

3 OF 4

CHECKED BY:

EB

SCALE:

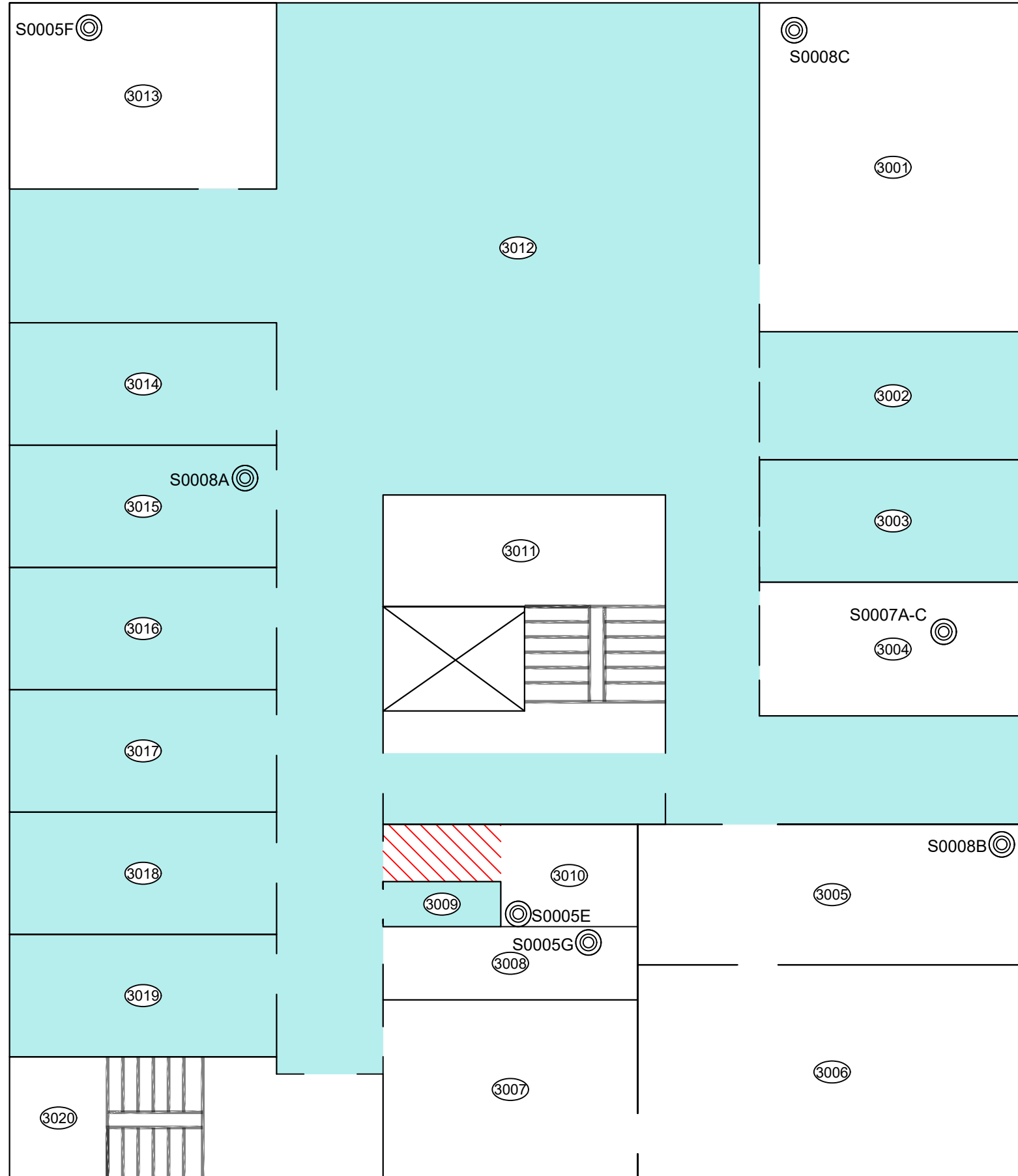
NTS

PIPES INSULATED WITH ASBESTOS-CONTAINING INSULATIONS MAY BE PRESENT IN INACCESSIBLE SPACES SUCH AS ABOVE SOLID CEILINGS, IN CHASES, IN COLUMN ENCLOSURES AND WITHIN SHAFTS.

NOT ALL KNOWN OR SUSPECTED ASBESTOS BUILDING MATERIALS MAY BE DEPICTED ON THE DRAWING. REFER TO THE ASBESTOS REASSESSMENT REPORT FOR A COMPLETE LIST OF KNOWN AND SUSPECTED ASBESTOS BUILDING MATERIALS.

LEGEND IS COLOUR DEPENDENT. NON-COLOUR COPIES MAY ALTER INTERPRETATION.

BASE PLAN PROVIDED BY CLIENT.



905-577-6206 [www.pinchin.com](http://www.pinchin.com)

LEGEND:

- LOCATION NUMBER
- ASBESTOS BULK SAMPLE

ASBESTOS-CONTAINING MATERIALS:

- PIPE INSULATION
- SINK UNDERCOATING
- GLUE ON TILES
- TEXTURE FINISH CEILING
- VINYL FLOOR TILES AND MASTIC
- MASTIC

CLIENT:



Hamilton-Wentworth  
Catholic District School Board

*Believing, Achieving, Serving*

LOCATION:

FATHER KYRAN KENNEDY  
90 MULBERRY STREET  
HAMILTON, ONTARIO

TITLE:

ASBESTOS ASSESSMENT  
FLOOR LEVEL 3

DATE:

AUGUST 2023

PROJECT # :

320582.004

DRAWN BY:

DS

DRAWING:

4 OF 4

CHECKED BY:

EB

SCALE:

NTS



**APPENDIX II**  
**Asbestos Analytical Certificates**



## Pinchin Ltd. Asbestos Laboratory Certificate of Analysis

**Project Name:** Hamilton-Wentworth Catholic School Board, Father Kyran Kennedy,  
90 Mulberry Street, Hamilton, Ontario

**Project No.:** 0272113.000

**Prepared For:** E. Balfour / M. Maiorana

**Lab Reference No.:** b230643

**Analyst(s):** K. Cockburn

**Date Received:** May 21, 2020

**Date Analyzed:** June 1, 2020

**# Samples submitted:** 3

**# Phases analyzed:** 1

### Method of Analysis:

#### **EPA 600/R-93/116 - Method for the Determination of Asbestos in Bulk Building Materials dated July, 1993**

Bulk samples are checked visually and scanned under a stereomicroscope. Slides are prepared and observed under a Polarized Light Microscope (PLM) at magnifications of 40X, 100X or 400X as appropriate. Asbestos fibres are identified by a combination of morphology, colour, refractive index, extinction, sign of elongation, birefringence and dispersion staining colours. A visual estimate is made of the percentage of asbestos present. A reported concentration of less than (<) the regulatory threshold (see chart below) indicates the presence of confirmed asbestos in trace quantities, limited to only a few fibres or fibre bundles in an entire sample. This method complies with provincial regulatory requirements where applicable. Multiple phases within a sample are analyzed and reported separately.

All bulk samples submitted to this laboratory for asbestos analysis are retained for a minimum of three months. Samples may be retrieved, upon request, for re-examination at any time during that period.

The Pinchin Ltd. Mississauga asbestos laboratory is accredited by the National Institute of Standards and Technology, National Voluntary Laboratory Accreditation Program (NVLAP Lab Code 101270-0) for the 'EPA – 40 CFR Appendix E to Subpart E of Part 763, Interim Method of the Determination of Asbestos in Bulk Insulation Samples,' and the 'EPA 600/R-93/116: Method for the Determination of Asbestos in Bulk Building Materials'; and meets all requirements of ISO/IEC 17025:2005.

This report relates only to the items tested.

**NOTE:** *This test report may not be reproduced, except in full, without the written approval of the laboratory. The client may not use this report to claim product endorsement by NVLAP or any agency of the U.S. Government. This report is valid only when signed in blue ink by the analyst. Vinyl asbestos floor tiles contain very fine fibres of asbestos and may be missed by some laboratories using the PLM method. Internal verification studies performed by Pinchin indicate that the chance of missing asbestos in floor tiles is no higher than about 2%. The vinyl tile study and laboratory documentation on measurement uncertainty is available upon request. The analysis of dust samples by PLM cannot be used as an indicator of past or present airborne asbestos fibre levels.*



**Pinchin Ltd. Asbestos Laboratory**  
***Certificate of Analysis***

**Project Name:** Hamilton-Wentworth Catholic School Board, Father Kyran Kennedy,  
90 Mulberry Street, Hamilton, Ontario  
**Project No.:** 0272113.000  
**Prepared For:** E. Balfour / M. Maiorana  
**Lab Reference No.:** b230643  
**Date Analyzed:** June 1, 2020

**BULK SAMPLE ANALYSIS**

SAMPLE IDENTIFICATION	SAMPLE DESCRIPTION	% COMPOSITION (VISUAL ESTIMATE)	
		ASBESTOS	OTHER
S0009A Parging cement, Lunch Room, Location 1	Homogeneous, grey, soft, parging cement.	Chrysotile 50-75%	Non-Fibrous Material 25-50%
S0009B Parging cement, Lunch Room, Location 1			Not Analyzed
Comments:	Analysis was stopped due to a previous positive result.		
S0009C Parging cement, Lunch Room, Location 1			Not Analyzed
Comments:	Analysis was stopped due to a previous positive result.		

**Reviewed by:**

**Reporting Analyst:**



Analyzed by: *[Signature]*

Reviewed by: *[Signature]*

Report Sent by: *[Signature]*



**Instructions:**

**Pinchin Ltd. - Asbestos Laboratory  
Internal Asbestos Bulk Sample Chain of Custody**

<b>Client Name:</b>	Hamilton-Wentworth Catholic School Board	<b>Project Address:</b>	90 Mulberry Street, Hamilton, Ontario
<b>Portfolio/Building No:</b>	Father Kyran Kennedy	<b>Pinchin File:</b>	272113
<b>Submitted by:</b>	Emily Balfour	<b>Email:</b>	ebalfour@pinchin.com
<b>CC Results to:</b>	Michael Maiorana	<b>CC Email:</b>	mmaiorana@pinchin.com
<b>Invoice to:</b>	Accounts Payable	<b>Invoice Email:</b>	ap@pinchin.com
<b>Date Submitted:</b>	May 19 2020	<b>Required by:</b>	May 26 2020
<b># of Samples:</b>	3	<b>Priority:</b>	5 Day Turnaround
<b>Year of Building Construction (Mandatory Field):</b>	1965		
<b>Do NOT Stop on Positive (Sample Numbers):</b>			
<b>Pinchin Group Company (Mandatory Field):</b>	Pinchin		

**To be Completed by Lab Personnel Only:**

<b>Lab Reference #:</b>	<i>6230643</i>	<b>Time:</b>	24 hour clock		
<b>Received by:</b>	<i>MAY 21 2020</i>	<b>Date:</b>	Month	Day	Year
<b>Name(s) of Analyst(s):</b>	<i>KC 2020/06/01</i>				

Sample Prefix	Sample No.	Sample Suffix	Sample Description/Location (Mandatory)
	S0009	A	Parging cement, Lunch Room, Location 1 <i>CH 50-757.</i>
	S0009	B	Parging cement, Lunch Room, Location 1 <i>- NA -</i>
	S0009	C	Parging cement, Lunch Room, Location 1 <i>- NA -</i>

**APPENDIX III**  
**Methodology**

## 1.0 GENERAL

An inspection was conducted to identify the asbestos-containing materials (ACM) incorporated in the structure and its finishes as defined by the scope of work.

Information regarding the location and condition of ACM encountered and visually estimated quantities were recorded. The locations of any samples collected were recorded on small-scale plans. As-built drawings and previous reports were referenced where provided.

Sample collection (where performed) was conducted in accordance with our Standard Operating Procedures.

The inspection for asbestos included friable and non-friable asbestos-containing materials (ACM). A friable material is a material that when dry can be crumbled, pulverized or powdered by hand pressure.

Where samples were collected, a separate set of samples was collected of each type of homogenous material suspected to contain asbestos. A homogenous material is defined by the US EPA as material that is uniform in texture and appearance, was installed at one time, and is unlikely to consist of more than one type or formulation of material. The homogeneous materials were determined by visual examination and available information on the phases of construction and prior renovations.

Where samples were collected, samples were collected at a rate that is in compliance with the requirements of local regulations and guidelines. The sampling strategy was also based on known ban dates and phase out dates of the use of asbestos; sampling of certain building materials is not conducted after specific construction dates. In addition, to be conservative, several years past these dates are added to account for some uncertainty in the exact start / finish date of construction and associated usage of ACM. In some cases, manufactured products such as asbestos cement pipe were visually identified without sample confirmation.

Where samples were collected, the asbestos analysis was completed using a stop-positive approach. Only one result meeting the regulated criteria was required to determine that a material is asbestos-containing, but all samples must be analyzed to conclusively determine that a material is non-asbestos. The laboratory stopped analyzing samples from a homogeneous material once a result equal to or greater than the regulated criteria is detected in any of the samples of that material. All samples of a homogeneous material were analyzed if no asbestos is detected. In some cases, all samples were analyzed in the sample set regardless of result.

Where samples were collected, the analysis was performed in accordance with Test Method EPA/600/R-93/116: Method for the Determination of Asbestos in Bulk Building Materials, July 1993.

Where samples were collected, analytical results were compared to the following criteria.



<b>Jurisdiction*</b>	<b>Friable</b>	<b>Non-Friable</b>
Ontario	0.5%	0.5%

Where building materials are described in the report as “non-asbestos” or “does not contain asbestos”, this means that either no asbestos was detected by the analytical method utilized in any of the multiple samples or, if detected, it is below the lower limit of an asbestos-containing material in the applicable regulation. Additionally, these terms are used for materials which historically are known to not include asbestos in their manufacturing.

Asbestos materials were evaluated in order to make recommendations regarding remedial work. The priority for remedial action was based on several factors:

- Friability (friable or non-friable);
- Condition (good, fair, poor, debris);
- Accessibility (ranking from accessible to all building users to inaccessible);
- Visibility (whether the material is obscured by other building components).
- Efficiency of the work (for example, if damaged ACM is being removed in an area, it may be most practical to remove all ACM in the area even if it is in good condition).

For a complete description of the Evaluation Criteria and Basis of Recommendations, refer to Annex A.

## **METHODOLOGY ANNEX A EVALUATION CRITERIA**



## EVALUATION CRITERIA AND BASIS OF RECOMMENDATIONS

The detailed asbestos assessment provides information regarding the location, condition, accessibility and friability of the asbestos-containing materials (ACM). In order to make recommendations for compliance with current regulations, Pinchin developed the following criteria.

### EVALUATION OF CONDITION

#### Friable Sprayed or Trowelled Fireproofing, Thermal Insulation and Texture Finishes (Surfacing Materials)

To evaluate the condition of ACM sprayed or trowelled on fireproofing, sprayed or trowelled thermal insulation (non-mechanical), or texture, decorative or acoustic finishes, the following criteria are applied:

<b>Good</b>	Surface of material shows no significant signs of damage, deterioration or delamination. Good condition includes unencapsulated or unpainted fireproofing or texture finishes, where no or limited delamination or damage is observed, or encapsulated fireproofing or texture finishes where the encapsulant or paint has been applied after the damage or fallout occurred.
<b>Poor</b>	A sprayed material that shows signs of significant damage or is significantly delaminating or deteriorating. This may be limited to surface delamination or some portion of the substrate may be exposed.

In Locations where damage exists in isolated areas, both good and poor condition may be applicable. The extent of each condition will be recorded. Fair condition is not utilized in the evaluation of ACM sprayed or trowelled fireproofing, sprayed or trowelled thermal insulation (non-mechanical), or texture, decorative or acoustic finishes.

The evaluation of the above products above ceilings may be limited by the number of observations and by building components such as ducts or full height walls that obstruct the above ceiling observations.

#### Friable Mechanical or Thermal System Insulation (TSI)

To evaluate the condition of mechanical insulation on vessels, boilers, breeching, ducts, pipes, fan units, equipment etc. the following criteria are applied:

<b>Good</b>	Insulation is completely covered in jacketing and exhibits no evidence of damage or deterioration. No insulation is exposed. Includes conditions where the jacketing has minor damage (i.e. scuffs or stains), but the jacketing is not penetrated.
<b>Fair</b>	Minor penetrating damage to jacketed insulation (cuts, tears, nicks, deterioration or delamination) or undamaged insulation that has never been jacketed. Insulation is exposed but not showing surface disintegration. The extent of missing insulation ranges from minor to none. Damage can be repaired.

---

<b>Poor</b>	Original insulation jacket is missing, damaged, deteriorated or delaminated. Insulation is exposed and significant areas have been dislodged. Damage cannot be readily repaired. Includes components where insulation may have been removed incompletely.
-------------	---

---

The evaluation of mechanical insulation may be limited by the number of observations made and building components such as ducts or full height walls that obstruct observations. It is often not possible to observe each foot of mechanical insulation from all angles.

### Potentially Friable Materials and Miscellaneous Friable Materials

Potentially friable ACM are products that are basically non-friable while in place but have the potential to generate friable dust upon removal or if significantly disturbed without appropriate procedures. These products may become friable if damaged. Potentially friable materials include materials such as acoustic ceiling tiles and plaster. To evaluate the condition of potentially friable materials, the following criteria are applied:

---

<b>Good</b>	No significant damage or deterioration. Still serving its intended use as a building material or finish.
<b>Fair</b>	Showing signs of some cracking or breakage, but is not deteriorating (e.g. cracked plaster, broken but in place ceiling tile, missing tile or section of plaster etc.). The condition is such that it is still serving its intended use as a building material or finish but may require repair for mainly cosmetic purposes.
<b>Poor</b>	Significant deterioration or breaking apart of the material. Material has deteriorated to the point it is not serving its intended use as building material or finish. Material has deteriorated to a point it has become friable. Normally potentially friable ACM in Poor condition is not repairable and requires at least localized removal and replacement.

---

### Non-Friable Materials

Non-friable ACM cover a wide range of products with a wide variation in their tendency to release dust or asbestos fibres to the air. Many of these materials, (particularly where the matrix is an unweathered bitumen, asphalt or tar material) do not release fibres except in very unusual circumstances or during significant disturbance (e.g. use of abrasive power tools). Others with a cementitious matrix (asbestos-cement products) can more readily release dust due to abrasion, demolition, weathering, etc. The potential for asbestos release from non-friable ACM is always lower than from friable ACM. To evaluate the condition of non-friable Materials, the following criteria are applied:

---

<b>Good</b>	No significant damage or deterioration. Still serving its intended use as a building material or finish.
-------------	--

---

---

<b>Fair</b>	Showing signs of some cracking or breakage but is not deteriorating (e.g. cracked vinyl floor tile, missing piece of tile or transite, etc.). The condition is such that it is still serving its intended use as a building material or finish but may require repair for mainly cosmetic purposes.
<b>Poor</b>	Significant deterioration or breaking apart of the material to the point at which it cannot be repaired, and it will require at least local removal. Material has deteriorated to the point it is not serving its intended use as building material or finish. Material may have deteriorated to a point where traffic or disturbance may cause it to become friable.

---

### Evaluation of ACM Debris

The identification of the exact location or presence of debris on the top of ceiling tiles is limited by the number of observations made and the presence of building components such as ducts or full height walls that obstruct observations.

The presence of fallen or dislodged ACM is noted separately from the ACM source and is referred to as Debris. Debris may be friable if from a friable ACM source or a badly deteriorated non-friable ACM source. Debris may also be non-friable (such as fallen pieces of transite sheet or mastic fittings, or broken, dislodged floor tiles).

---

<b>Debris</b>	Debris may be friable or non-friable but is always identified as debris.
---------------	--

---

### Evaluation of Presumed Asbestos-Containing Material (PACM)

Presumed asbestos-containing materials (PACM), are building materials that may contain asbestos but were not sampled or analyzed due to inaccessibility or the need to perform destructive testing to obtain a reasonable sample set. Evaluation of these materials is based on the assumption that these PACM are asbestos-containing.

A list of PACM is provided in the report and they are generally not included in the detailed room by room reports. Typically, they are excluded because they are inaccessible or present in very small quantities. If PACM are evaluated, Pinchin uses the criteria that correspond with the type (and friability) of the material listed above.

## EVALUATION OF ACCESSIBILITY

The accessibility of building materials known or suspected of being ACM is rated according to the following criteria:

<b>Access (A)</b>	Common areas of the building within reach of all building users (approximately 8' - 9' from floor or standard ceiling height). Includes other areas where occupant activities may result in disturbance of material that is not normally within reach from floor level, but may be disturbed by common activities (e.g. gymnasiums, workshops, warehouses)
<b>Access (B)</b>	Areas of the building accessed primarily by Maintenance/Caretaking/Janitorial Staff and within reach without use of a ladder. Includes areas within reach in Boiler Rooms, Electrical Rooms, Janitors Closets, Elevator Rooms, Mechanical Rooms, etc. Includes materials within reach from fixed ladders or catwalks, mezzanines, and accessible pipe chases.
<b>Access (C) and Visible</b>	Areas of the building above 8' - 9' where use of a ladder or scaffold is required to reach the ACM. Only includes ACM that are visible to view without the removal or opening of other building components such as ceiling tiles or service access panels. Visible column on HMIS sheets will say YES.
<b>Access (C) and not Visible</b>	Areas of the building above 8' - 9' where use of a ladder or scaffold is required to reach the ACM. Includes ACM that are not visible to view and require the removal of a building component to see, such as ceilings tiles or access panels to view and access. Includes rarely entered crawl spaces, attic spaces, etc. Observations will be limited to the extent visible from the access points. Visible column on HMIS sheets will say NO.
<b>Access (D)</b>	Areas of the building behind inaccessible solid ceiling systems, walls or equipment etc. where demolition of the ceiling, wall or equipment etc. is required to reach the ACM. Material inaccessible due to height or location or is only accessed under unusual situations. Evaluation of condition and extent of ACM is limited or impossible, depending on the surveyor's ability to visually examine materials in Access D.

## ACTION MATRIX AND DEFINITIONS

Pinchin's evaluation of the viability of a specific asbestos control option is based on the consideration of the friability, condition, accessibility and visibility of a material. The logic used is that damaged ACM located in an area frequently accessed by all building occupants is of a higher priority than damaged ACM located in an infrequently accessed service area. The action matrix considers the potential for fibre release (primarily from friable ACM) and the possible concerns from regulatory bodies and many building occupants to all damaged ACM (including non-friable).

In any building with asbestos, many current regulations require an Asbestos Management Program be implemented. Depending on the condition and the accessibility, more active measures such as repair or removal may be recommended. The following matrix provides guidance for recommended Actions in the absence of renovation or demolition. In the event of construction or maintenance activity which will disturb ACM more aggressive control or removal will be required.

### Action Matrix

The following tables outline the action decisions based on the relationship of assessed factors. Table I applies to friable ACM. Table II applies to non-friable ACM.

**Table I Decision Matrix for Friable ACM**

Access	Condition			Debris
	Good	Fair	Poor	
(A)	Action 5 <sup>1</sup>	Action 5 <sup>2</sup>	Action 3	Action 1
(B)	Action 7	Action 6 <sup>3</sup>	Action 3	Action 1
(C) Visible	Action 7	Action 6	Action 3	Action 2
(C) Not Visible	Action 7	Action 7	Action 4	Action 2
(D)	Action 7	Action 7	Action 7	Action 7

**Table II Decision Matrix for Potentially Friable and Non-Friable ACM**

Access	Condition			Debris
	Good	Fair	Poor	
(A)	Action 7	Action 7 <sup>4</sup>	Action 3	Action 1
(B)	Action 7	Action 7	Action 3	Action 1
(C) Visible	Action 7	Action 7	Action 4	Action 2
(C) Not Visible	Action 7	Action 7	Action 4	Action 2
(D)	Action 7	Action 7	Action 7	Action 7

### Action Definitions

The following are the definitions in the Action Matrix Table presented above:

#### Action Definitions

<b>Action 1</b>	Clean-Up of ACM Debris Restrict access that is likely to cause a disturbance of the ACM Debris and clean up ACM Debris. Utilize appropriate asbestos precautions.
-----------------	--

<sup>1</sup> If friable ACM in access (A)/Good condition is not proactively removed Action 7 (Manage) is recommended.

<sup>2</sup> If friable ACM in access (A)/Fair condition is not proactively removed repair is recommended.

<sup>3</sup> If friable ACM in access (B)/Fair condition is likely to be disturbed after repair proactive removal is recommended.

<sup>4</sup> Action 7 is recommended for all non-friable ACM in Fair condition however some clients may wish to repair or take some action primarily for cosmetic reasons

---

**Action Definitions**

---

<b>Action 2</b>	<p>Precautions for Access Which may Disturb ACM Debris</p> <p>Use appropriate means to isolate the debris or to limit entry to the area which may disturb the material. At locations where ACM Debris can remain in place in lieu of removal or clean-up (e.g. Debris on top of ceiling tiles or behind lockable door), Utilize appropriate asbestos precautions to enter the area if this will disturb debris. The precautions will be required until the ACM Debris has been cleaned up.</p>
<b>Action 3</b>	<p>ACM Removal</p> <p>Remove ACM. Utilize asbestos procedures appropriate to the scope of the removal work. Until it is removed, restrict access to the material so it is not disturbed.</p>
<b>Action 4</b>	<p>Precautions for Work Which may Disturb ACM in Poor Condition. Utilize appropriate asbestos precautions if ACM may be disturbed by work on or near ACM. This does not require restricting access to the area, only control of work which may contact or disturb the ACM. Removal is the only viable option if work will disturb ACM.</p>
<b>Action 5</b>	<p>Proactive ACM Removal</p> <p>Remove friable ACM where the presence of friable asbestos in Good condition is not desirable. If friable ACM in Fair condition is not removed, then Repair friable ACM.</p>
<b>Action 6</b>	<p>ACM Repair</p> <p>Repair friable ACM in Fair condition which is not likely to be damaged again or disturbed by normal use of the area or room. Pinchin recommends proactive removal if friable ACM is likely to be damaged or disturbed during normal use of the area or room</p>
<b>Action 7</b>	<p>Asbestos Management Program with Routine Surveillance Implement an Asbestos Management Program, including routine surveillance of ACM. Reassess materials regularly (typically once per year).</p>

---

**APPENDIX IV**  
**Location List**

Client: Hamilton-Wentworth Catholic District Sch

Site: 90 Mulberry Street, Hamilton, ON

Building Name: Father Kyran Kennedy Catholic Education Centre

Survey Date: 2017-09-08

Last Re-Assessment: 2023-07-20

Building Phases: A: 1965

Location No.	Name or Description	Area ft <sup>2</sup>	Floor No.	Bldg. Phase	Notes
0	Presumed Asbestos-Containing Materials	0	0	A	Where present, these materials are assumed to contain asbestos until otherwise proven by sampling and analysis.
1	Lunch Room, room no. B001	0	B	A	
2	Washroom, room no. B002	0	B	A	
3	Storage, room no. B003	0	B	A	
4	Storage, room no. B004	0	B	A	
5	Print Office, room no. B005	0	B	A	
6	Print Office, room no. B006	0	B	A	
7	Print Room, room no. B007	0	B	A	
8	Corridor, room no. B008	0	B	A	Amalgamated into 1
9	Shipping, room no. B009	0	B	A	
10	Shipping Office, room no. B010	0	B	A	
11	Mechanical, room no. B011	0	B	A	
12	Electrical, room no. B012	0	B	A	Amalgamated into 11
13	Records Storage, room no. B013	0	B	A	
14	Stairwell, room no. B014	0	B	A	
15	Storage, room no. B015	0	b	A	
16	Storage, room no. B016	0	B	A	
17	Storage, room no. B017	0	B	A	
1001	Hearing Room	0	1	A	
1002	Board Room	0	1	A	
1003	Kitchenette	0	1	A	
1004	Washroom	0	1	A	
1005	Office	0	1	A	
1006	Office	0	1	A	
1007	Office	0	1	A	
1008	Office	0	1	A	
1009	Womens Washroom	0	1	A	
1010	Mens Washroom	0	1	A	
1011	Open Office Area	0	1	A	
1012	Vault	0	1	A	
1013	Office	0	1	A	
1014	Office	0	1	A	
1015	Reception	0	1	A	
1016	Stairwell	0	1	A	
1017	Corridor	0	1	A	
2001	Meeting Room	0	2	A	
2002	Office	0	2	A	
2003	Office	0	2	A	
2004	Office	0	2	A	
2005	Office	0	2	A	
2006	Copy Room	0	2	A	
2007	Server Room	0	2	A	NO ACCESS - No Access
2008	Office	0	2	A	
2009	Meeting Room	0	2	A	
2010	Office	0	2	A	
2011	Office	0	2	A	
2012	Staff Room	0	2	A	
2013	Office	0	2	A	
2014	Office	0	2	A	
2015	Office	0	2	A	
2016	Office	0	2	A	
2017	Office	0	2	A	
2018	Stairwell	0	2	A	
2019	Womens Washroom	0	2	A	
2020	Custodian Closet	0	2	A	
2021	First Aid Room	0	2	A	
2022	Storage Closet	0	2	A	
2023	Open Office Area	0	2	A	
2025	Photography Room	0	2	A	
3001	Conference Room	0	3	A	



Location No.	Name or Description	Area ft <sup>2</sup>	Floor No.	Bldg. Phase	Notes
3002	Office	0	3	A	
3003	Office	0	3	A	
3004	Chapel	0	3	A	
3005	Reception	0	3	A	
3006	Directors Office	0	3	A	
3007	Meeting Room	0	3	A	
3008	Mens Washroom	0	3	A	
3009	Custodian Room	0	3	A	
3010	Womens Washroom	0	3	A	
3011	Stairwell	0	3	A	
3012	Open Office Area	0	3	A	
3013	Office	0	3	A	
3014	Office	0	3	A	
3015	Office	0	3	A	
3016	File Room	0	3	A	
3017	Office	0	3	A	
3018	Office	0	3	A	
3019	Staff Room	0	3	A	

**APPENDIX V**  
**Summary Report / Sample Log**

Client: Hamilton-Wentworth Catholic District Sch

Site: 90 Mulberry Street, Hamilton, ON

Building Name: Father Kyran Kennedy Catholic Education Centre

Survey Date: 2017-09-08

HAZMAT	Sample No	System/Component/Material/Sample Description	Locations	Bldg. Phase	LF	SF	EA	%	Type	Positive	Friability
Asbestos	S0001 ABC	Wall     Plaster	14	A	0	0	0	0	None Detected	No	
Asbestos	S0002 ABCDE	Ceiling     Plaster	1,3,7,8,9,10,16,17	A	0	0	0	100	None Detected	No	
Asbestos	S0003 ABC	Wall   Column   Plaster	4,7,9,13	A	0	0	0	100	None Detected	No	
Asbestos	S0004 ABC	Wall     Drywall And Joint Compound	4,5,6,7,9,10	A	0	0	0	100	None Detected	No	
Asbestos	S0005 ABCDEFG	Ceiling, Wall, Ceiling, Wall     Plaster	14,1003,1004,1005,1006,1007,1008,1009,1010,1011,1012,1013,1014,1015,1016,1017,2001,2002,2003,2004,2005,2006,2008,2009,2010,2011,2012,2013,2014,2015,2016,2017,2018,2019,2020,2021,2022,2023,2025,3001,3002,3003,3004,3005,3006,3007,3008,3009,3010,3011,3012,3013,3014,3015,3016,3017,3018,3019	A	0	0	0	100	None Detected	No	
Asbestos	S0006 ABC	Wall     Drywall And Joint Compound	2004,2005,2006,2008,2009,2010,2011,2012,2013,2014,2015,2016,2017,2025	A	0	0	0	0	None Detected	No	
Asbestos	S0007 ABC	Wall     Texture Coat	3004	A	0	0	0	100	None Detected	No	
Asbestos	S0008 ABC	Wall     Drywall And Joint Compound	3001,3002,3003,3004,3005,3006,3007,3009,3012,3013,3014,3015,3016,3017,3018,3019	A	0	0	0	100	None Detected	No	
Asbestos	S0009 ABC	Piping     Parging Cement	1,2025	A	0	0	6	0	Chrysotile	Yes	F
Asbestos	V9000	Ceiling   Acoustic Tile   Ceiling Tiles (glue-on)   1x1 Fissured (previously Sampled)	1003,3010	A	0	0	0	51	Confirmed Asbestos	Yes	PF
Asbestos	V9000	Ceiling     Texture Coat   (hwcdsb Sample Parcel 1920269)	1001,1002	A	0	0	0	100	Confirmed Asbestos	Yes	F
Asbestos	V9500	Floor     Mastic	1,4,5,6,1003	A	0	0	0	100	Presumed Asbestos	Yes	NF
Asbestos	V9500	Floor     Vinyl Floor Tile And Mastic   9x9 Beige With Brown Streak, 9x9 Beige, Beige With Light And Dark Streaks, Beige With White And Grey Specks, Brown With Brown And Grey Specks, Brown With Multi-brown Fleck, Cream With Brown And White Speck, Cream With Brown And White Specks, Dark Pink Marble, Pink Marble, White With Grey	7,1011,1012,1017,2005,2006,2008,2009,2010,2012,2013,2015,2020,2021,2023,2025,3002,3003,3009,3012,3014,3015,3016,3017,3018,3019	A	0	0	0	100	Presumed Asbestos	Yes	NF
Asbestos	V9500	Other   Sink   Mastic, Gold	1003	A	0	0	1	0	Presumed Asbestos	Yes	NF
Asbestos	V9500	Other     N/a   Roofing Felts And Tar, Mastics, Floor Levelling Compound, Ceramic Tile Setting Compound, Elevator And Lift Brakes, Electrical Components, Mechanical Packing,	0	A	0	0	0	100	Presumed Asbestos	Yes	NF

HAZMAT	Sample No	System/Component/Material/Sample Description	Locations	Bldg. Phase	LF	SF	EA	%	Type	Positive	Friability
		Ropes And Gaskets, Vermiculite, Adhesives And Duct Mastics, Caulking And Putties, Fibre-reinforced Paints And Coatings, Paper Products, Soffit And Fascia Boards, Fire Resistant Doors, Stucco, Plaster Or Other Cementitious Parge Coatings, Vibration Dampers On Hvac Equipment, Terrazzo, Ropes And Gaskets In Cast-iron Bell And Spigot Joints, Sealants On Pipe Threads									
Asbestos	V0000	Ceiling   Acoustic Tile   Ceiling Tiles (lay-in)	1,4	A	0	0	0	100	Non Asbestos	No	
Asbestos	V0000	Ceiling   Acoustic Tile   Ceiling Tiles (lay-in)   24x48 Pinhole And Fleck (date Stamp 2015)	2025	A	0	0	0	0	Non Asbestos	No	
Asbestos	V0000	Ceiling   Acoustic Tile   Ceiling Tiles (lay-in)   2x2 Short Fissure And Random Pinhole (date Stamped 05/18/09)	1005,1006,1007,1008,1011,1013,1014,1017,2001 2002,2003,2004,2005,2006,2008,2009,2010,2011 2012,2013,2014,2015,2016,2017,2018,2023,3001 3002,3003,3004,3011,3012,3014,3015,3016,3017 3018,3019	A	0	0	0	83	Non Asbestos	No	
Asbestos	V0000	Ceiling   Acoustic Tile   Ceiling Tiles (lay-in)   2x2 Short Fissure And Random Pinhole (date Stamped 05/18/19)	3013	A	0	0	0	0	Non Asbestos	No	
Asbestos	V0000	Ceiling   Acoustic Tile   Ceiling Tiles (lay-in)   2x2 Textured Pattern (previously Sampled)	1015,3005,3006,3007	A	0	0	0	0	Non Asbestos	No	
Asbestos	V0000	Ceiling   Acoustic Tile   Ceiling Tiles (lay-in)   2x4 Long Fissure And Random Pinhole (date Stamp 2008)	5	A	0	0	0	100	Non Asbestos	No	
Asbestos	V0000	Ceiling   Acoustic Tile   Ceiling Tiles (lay-in)   2x4 Long Fissure And Random Pinhole (previously Sampled)	6	A	0	0	0	100	Non Asbestos	No	
Asbestos	V0000	Ceiling   Acoustic Tile   Ceiling Tiles (lay-in)   Textured Pattern (previously Sampled)	1016	A	0	0	0	0	Non Asbestos	No	
Asbestos	V0000	Ceiling     Plaster   Textured, (hwcdsb Sample Parcel 1921079)	11	A	0	0	0	100	Non Asbestos	No	
Asbestos	V0000	Floor     Vinyl Sheet Flooring   Vinyl Plank Installed Post 2020	1,4,5,6	A	0	0	0	100	Non Asbestos	No	
Asbestos	V0000	Wall     Drywall And Joint Compound   (previously Sampled)	1,8	A	0	0	0	100	Non Asbestos	No	

## Legend:

Sample number		Units			
S####	Asbestos sample collected	SF	Square feet	NF	Non Friable material.
L####	Paint sample collected	LF	Linear feet	F	Friable material
P####	PCB sample collected	EA	Each	PF	Potentially Friable material
M####	Mould sample collected	%	Percentage		
V####	Material visually similar to numbered sample collected				
V0000	Known non Hazardous Material				
V9000	Material is visually identified as Hazardous Material				
V9500	Material is presumed to be Hazardous Material				
[Loc. No.]	Abated Material				

**APPENDIX VI**  
**HMIS All Data Report**

**Client:** Hamilton-Wentworth Catholic District Sch    **Site:** Admin  
**Location:** #0 : Presumed Asbestos-Containing Materials    **Floor:** 0  
**Survey Date:** 2017-09-08

**Building Name:** Father Kyran Kennedy Catholic Education Centre  
**Room #:**    **Area (sqft):** 0  
**Last Re-Assessment:** 2023-07-20

ASBESTOS																	
System	Component	Material	Item	Covering	A*	V*	AP*	Good	Fair	Poor	Unit	Sample	Asbestos Type	Amount	Hazard	Friable	
Other		N/A, Roofing felts and tar, mastics, Floor levelling compound, Ceramic tile setting compound, Elevator and Lift Brakes, Electrical components, Mechanical packing, ropes and gaskets, Vermiculite, Adhesives and duct mastics, Caulking and putties, Fibre-reinforced paints and coatings, Paper products, Soffit and fascia boards, Fire resistant doors, Stucco, plaster or other cementitious parge coatings, Vibration dampers on HVAC equipment, Terrazzo, Ropes and gaskets in cast-iron bell and spigot joints, Sealants on pipe threads			D	N		100(7)				%	V9500	Presumed Asbestos		Presumed Asbestos	NF

Where present, these materials are assumed to contain asbestos until otherwise proven by sampling and analysis.

**Client:** Hamilton-Wentworth Catholic District Sch    **Site:** Admin  
**Location:** #1 : Lunch Room    **Floor:** B  
**Survey Date:** 2017-09-08

**Building Name:** Father Kyran Kennedy Catholic Education Centre  
**Room #:** B001    **Area (sqft):** 0  
**Last Re-Assessment:** 2023-07-20

ASBESTOS																	
System	Component	Material	Item	Covering	A*	V*	AP*	Good	Fair	Poor	Unit	Sample	Asbestos Type	Amount	Hazard	Friable	
Ceiling		Plaster, Textured			C	Y						S0002ABC	None Detected	N.D.	None		
Ceiling	Acoustic Tile	Ceiling Tiles (lay-in)			C	Y						V0000	Non-Asbestos		None		
Floor		Vinyl Floor Tile and Mastic, White with Brown and Black Streaks			A	Y		100				%	V9500	[None]	[Abated]		
Floor		Vinyl Sheet Flooring, Vinyl plank installed post 2020			A	Y							V0000	Non-Asbestos	None		
Floor		Mastic		Vinyl Sheet Flooring	D	N		100(7)				%	V9500	Presumed Asbestos	Presumed Asbestos	NF	
Other	Sink	Mastic, Gold			A	N		2				EA	V9500	[None]	[Abated]		
Piping		Fibreglass	Insulation		C	Y											
Piping		Parging Cement	Fitting		C	Y		3(7)				EA	S0009ABC	Chrysotile	50-75%	Confirmed Asbestos	F
Wall		Drywall and joint compound, (previously sampled)	ALL		A	Y		100				%	V0000	Non-Asbestos	None		
Wall		Masonry			A	Y											

**Client:** Hamilton-Wentworth Catholic District Sch    **Site:** Admin  
**Location:** #2 : Washroom    **Floor:** B  
**Survey Date:** 2017-09-08

**Building Name:** Father Kyran Kennedy Catholic Education Centre  
**Room #:** B002    **Area (sqft):** 0  
**Last Re-Assessment:** 2023-07-20

ASBESTOS																
System	Component	Material	Item	Covering	A*	V*	AP*	Good	Fair	Poor	Unit	Sample	Asbestos Type	Amount	Hazard	Friable
Floor		Terrazzo			A	Y										
Structure	Deck	Steel			C	Y										
Wall		Masonry, concrete block			A	Y										

**Client:** Hamilton-Wentworth Catholic District Sch    **Site:** Admin  
**Location:** #3 : Storage    **Floor:** B  
**Survey Date:** 2017-09-08

**Building Name:** Father Kyran Kennedy Catholic Education Centre  
**Room #:** B003    **Area (sqft):** 0  
**Last Re-Assessment:** 2023-07-20

ASBESTOS																
System	Component	Material	Item	Covering	A*	V*	AP*	Good	Fair	Poor	Unit	Sample	Asbestos Type	Amount	Hazard	Friable
Ceiling		Plaster			C	Y		100			%	V0002	None Detected	N.D.	None	
Floor		Concrete (poured)			A	Y										
Wall		Concrete (poured)			A	Y										



**Client:** Hamilton-Wentworth Catholic District Sch    **Site:** Admin  
**Location:** #4 : Storage    **Floor:** B  
**Survey Date:** 2017-09-08

**Building Name:** Father Kyran Kennedy Catholic Education Centre  
**Room #:** B004  
**Last Re-Assessment:** 2023-07-20

**Area (sqft):** 0

ASBESTOS																
System	Component	Material	Item	Covering	A*	V*	AP*	Good	Fair	Poor	Unit	Sample	Asbestos Type	Amount	Hazard	Friable
Ceiling		Ceiling Tiles (lay-in)			C	Y		100			%	V0000	Non-Asbestos		None	
Floor		Vinyl Sheet Flooring, Vinyl plank installed post 2020			A	Y		100			%	V0000	Non-Asbestos		None	
Floor		Mastic			A	Y		100			%	V9500	[None]		[Abated]	
Floor		Mastic		Vinyl Sheet Flooring	D	N						V9500	Presumed Asbestos		Presumed Asbestos	NF
Wall		Drywall and joint compound			A	Y						S0004C	None Detected		None	
Wall		Masonry			A	Y										
Wall	Column	Plaster, textured			A	Y						S0003C	None Detected	N.D.	None	

**Client:** Hamilton-Wentworth Catholic District Sch    **Site:** Admin  
**Location:** #5 : Print Office    **Floor:** B  
**Survey Date:** 2017-09-08

**Building Name:** Father Kyran Kennedy Catholic Education Centre  
**Room #:** B005    **Area (sqft):** 0  
**Last Re-Assessment:** 2023-07-20

ASBESTOS																
System	Component	Material	Item	Covering	A*	V*	AP*	Good	Fair	Poor	Unit	Sample	Asbestos Type	Amount	Hazard	Friable
Ceiling	Acoustic Tile	Ceiling Tiles (lay-in), 2x4 Long Fissure and Random Pinhole (date stamp 2008)			C	Y		100			%	V0000	Non-Asbestos		None	
Floor		Vinyl Floor Tile and Mastic, Grey Marble			A	Y		100			%	V9500	[None]		[Abated]	
Floor		Vinyl Sheet Flooring, Vinyl plank installed post 2020			A	Y		100			%	V0000	Non-Asbestos		None	
Floor		Mastic		Vinyl Sheet Flooring	D	N					%	V9500	Presumed Asbestos		Presumed Asbestos	NF
Piping		Fibreglass	Insulation		C	Y										
Wall		Drywall and joint compound			A	Y						V0004	None Detected		None	

**Client:** Hamilton-Wentworth Catholic District Sch    **Site:** Admin  
**Location:** #6 : Print Office    **Floor:** B  
**Survey Date:** 2017-09-08

**Building Name:** Father Kyran Kennedy Catholic Education Centre  
**Room #:** B006    **Area (sqft):** 0  
**Last Re-Assessment:** 2023-07-20

ASBESTOS																
System	Component	Material	Item	Covering	A*	V*	AP*	Good	Fair	Poor	Unit	Sample	Asbestos Type	Amount	Hazard	Friable
Ceiling	Acoustic Tile	Ceiling Tiles (lay-in), 2x4 Long Fissure and Random Pinhole (previously sampled)			C	Y		100			%	V0000	Non-Asbestos		None	
Floor		Vinyl Floor Tile and Mastic, Grey Marble			A	Y		100			%	V9500	[None]		[Abated]	
Floor		Vinyl Sheet Flooring, Vinyl plank installed post 2020						100			%	V0000	Non-Asbestos		None	
Floor		Mastic		Vinyl Sheet Flooring	D	N		100(7)			%	V9500	Presumed Asbestos		Presumed Asbestos	NF
Piping		Fibreglass	Insulation		C	Y										
Wall		Drywall and joint compound			A	Y		100			%	V0004	None Detected		None	

**Client:** Hamilton-Wentworth Catholic District Sch    **Site:** Admin  
**Location:** #7 : Print Room    **Floor:** B  
**Survey Date:** 2017-09-08

**Building Name:** Father Kyran Kennedy Catholic Education Centre  
**Room #:** B007  
**Last Re-Assessment:** 2023-07-20

**Area (sqft):** 0

ASBESTOS																
System	Component	Material	Item	Covering	A*	V*	AP*	Good	Fair	Poor	Unit	Sample	Asbestos Type	Amount	Hazard	Friable
Ceiling		Plaster, Textured			C	Y						S0002D	None Detected	N.D.	None	
Floor		Vinyl Floor Tile and Mastic, Grey Marble			A	Y		100			%	V9500	[None]		[Abated]	
Floor		Vinyl Floor Tile and Mastic, White with Brown and Black Streaks			A	Y		100			%	V9500	[None]		[Abated]	
Floor		Vinyl Floor Tile and Mastic, White with Grey			A	Y		100(7)			%	V9500	Presumed Asbestos		Presumed Asbestos	NF
Floor		Vinyl Floor Tile and Mastic, Beige Marble			A	Y		100			%	V9500	[None]		[Abated]	
Piping		Fibreglass	Insulation		C	Y										
Wall		Drywall and joint compound			A	Y		100			%	S0004A	None Detected		None	
Wall		Masonry			A	Y										
Wall	Column	Plaster			A	Y		100			%	V0003	None Detected	N.D.	None	

**Client:** Hamilton-Wentworth Catholic District Sch    **Site:** Admin  
**Location:** #8 : Corridor    **Floor:** B  
**Survey Date:** 2017-09-08

**Building Name:** Father Kyran Kennedy Catholic Education Centre  
**Room #:** B008    **Area (sqft):** 0  
**Last Re-Assessment:** 2023-07-20

ASBESTOS																
System	Component	Material	Item	Covering	A*	V*	AP*	Good	Fair	Poor	Unit	Sample	Asbestos Type	Amount	Hazard	Friable
Ceiling		Plaster, textured			C	Y		100			%	V0002	None Detected	N.D.	None	
Floor		Vinyl Floor Tile and Mastic, White with Brown and Black Streaks			A	Y		100			%	V9500	[None]		[Abated]	
Floor		Vinyl Floor Tile and Mastic, White with Grey			A	Y		100			%	V9500	[None]		[Abated]	
Wall		Drywall and joint compound, (previously sampled)			A	Y		100			%	V0000	Non-Asbestos		None	
Wall		Masonry			A	Y										

Amalgamated into 1

**Client:** Hamilton-Wentworth Catholic District Sch    **Site:** Admin  
**Location:** #9 : Shipping    **Floor:** B  
**Survey Date:** 2017-09-08

**Building Name:** Father Kyran Kennedy Catholic Education Centre  
**Room #:** B009    **Area (sqft):** 0  
**Last Re-Assessment:** 2023-07-20

ASBESTOS																
System	Component	Material	Item	Covering	A*	V*	AP*	Good	Fair	Poor	Unit	Sample	Asbestos Type	Amount	Hazard	Friable
Ceiling		Plaster, Textured			C	Y						S0002E	None Detected	N.D.	None	
Floor		Concrete (poured)			A	Y										
Piping		Fibreglass	Insulation		C	Y										
Wall		Drywall and joint compound			A	Y						S0004B	None Detected		None	
Wall		Masonry			A	Y										
Wall	Column	Plaster			A	Y						S0003B	None Detected	N.D.	None	

**Client:** Hamilton-Wentworth Catholic District Sch    **Site:** Admin  
**Location:** #10 : Shipping Office    **Floor:** B  
**Survey Date:** 2017-09-08

**Building Name:** Father Kyran Kennedy Catholic Education Centre  
**Room #:** B010    **Area (sqft):** 0  
**Last Re-Assessment:** 2023-07-20

ASBESTOS																
System	Component	Material	Item	Covering	A*	V*	AP*	Good	Fair	Poor	Unit	Sample	Asbestos Type	Amount	Hazard	Friable
Ceiling		Plaster, textured			C	Y						V0002	None Detected	N.D.	None	
Floor		Concrete (poured)			A	Y										
Wall		Drywall and joint compound			A	Y						V0004	None Detected		None	

**Client:** Hamilton-Wentworth Catholic District Sch    **Site:** Admin  
**Location:** #11 : Mechanical    **Floor:** B  
**Survey Date:** 2017-09-08

**Building Name:** Father Kyran Kennedy Catholic Education Centre  
**Room #:** B011    **Area (sqft):** 0  
**Last Re-Assessment:** 2023-07-20

ASBESTOS																
System	Component	Material	Item	Covering	A*	V*	AP*	Good	Fair	Poor	Unit	Sample	Asbestos Type	Amount	Hazard	Friable
Ceiling		Plaster, textured, (HWCDSB sample PARACEL 1921079)			C	Y		100			%	V0000	Non-Asbestos		None	
Floor		Concrete (poured)			A	Y										
Piping		Fibreglass	Insulation		C	Y										
Wall		Masonry			A	Y										

**Client:** Hamilton-Wentworth Catholic District Sch    **Site:** Admin  
**Location:** #12 : Electrical    **Floor:** B  
**Survey Date:** 2017-09-08

**Building Name:** Father Kyran Kennedy Catholic Education Centre  
**Room #:** B012    **Area (sqft):** 0  
**Last Re-Assessment:** 2023-07-20

ASBESTOS																
System	Component	Material	Item	Covering	A*	V*	AP*	Good	Fair	Poor	Unit	Sample	Asbestos Type	Amount	Hazard	Friable
Ceiling		Concrete (poured)			C	Y										
Floor		Concrete (poured)			A	Y										
Wall		Masonry			A	Y										

Amalgamated into 11

**Client:** Hamilton-Wentworth Catholic District Sch    **Site:** Admin  
**Location:** #13 : Records Storage    **Floor:** B  
**Survey Date:** 2017-09-08

**Building Name:** Father Kyran Kennedy Catholic Education Centre  
**Room #:** B013    **Area (sqft):** 0  
**Last Re-Assessment:** 2023-07-20

ASBESTOS																
System	Component	Material	Item	Covering	A*	V*	AP*	Good	Fair	Poor	Unit	Sample	Asbestos Type	Amount	Hazard	Friable
Ceiling		Concrete (poured)			C	Y										
Floor		Concrete (poured)			A	Y										
Piping		Fibreglass	Insulation		C	Y										
Wall		Masonry			A	Y										
Wall	Column	Plaster			A	Y						S0003A	None Detected	N.D.	None	

**Client:** Hamilton-Wentworth Catholic District Sch    **Site:** Admin  
**Location:** #14 : Stairwell    **Floor:** B  
**Survey Date:** 2017-09-08

**Building Name:** Father Kyran Kennedy Catholic Education Centre  
**Room #:** B014    **Area (sqft):** 0  
**Last Re-Assessment:** 2023-07-20

ASBESTOS																
System	Component	Material	Item	Covering	A*	V*	AP*	Good	Fair	Poor	Unit	Sample	Asbestos Type	Amount	Hazard	Friable
Ceiling		Plaster			C	Y						V0005	None Detected	N.D.	None	
Floor		Terrazzo			A	Y										
Wall		Plaster			A	Y						S0001ABC	None Detected	N.D.	None	

**Client:** Hamilton-Wentworth Catholic District Sch    **Site:** Admin  
**Location:** #15 : Storage    **Floor:** b  
**Survey Date:** 2017-09-08

**Building Name:** Father Kyran Kennedy Catholic Education Centre  
**Room #:** B015    **Area (sqft):** 0  
**Last Re-Assessment:** 2023-07-20

ASBESTOS																
System	Component	Material	Item	Covering	A*	V*	AP*	Good	Fair	Poor	Unit	Sample	Asbestos Type	Amount	Hazard	Friable
Ceiling		Concrete (poured)			C	Y										
Floor		Concrete (poured)			A	Y										
Wall		Masonry			A	Y										

**Client:** Hamilton-Wentworth Catholic District Sch    **Site:** Admin  
**Location:** #16 : Storage    **Floor:** B  
**Survey Date:** 2017-09-08

**Building Name:** Father Kyran Kennedy Catholic Education Centre  
**Room #:** B016    **Area (sqft):** 0  
**Last Re-Assessment:** 2023-07-20

ASBESTOS																
System	Component	Material	Item	Covering	A*	V*	AP*	Good	Fair	Poor	Unit	Sample	Asbestos Type	Amount	Hazard	Friable
Ceiling		Plaster, textured			C	Y		100			%	V0002	None Detected	N.D.	None	
Floor		Concrete (poured)			A	Y										
Wall		Masonry			A	Y										

**Client:** Hamilton-Wentworth Catholic District Sch    **Site:** Admin  
**Location:** #17 : Storage    **Floor:** B  
**Survey Date:** 2017-09-08

**Building Name:** Father Kyran Kennedy Catholic Education Centre  
**Room #:** B017    **Area (sqft):** 0  
**Last Re-Assessment:** 2023-07-20

ASBESTOS																
System	Component	Material	Item	Covering	A*	V*	AP*	Good	Fair	Poor	Unit	Sample	Asbestos Type	Amount	Hazard	Friable
Ceiling		Plaster			C	Y		100			%	V0002	None Detected	N.D.	None	
Floor		Concrete (poured)			A	Y										
Wall		Masonry			A	Y										



**Client:** Hamilton-Wentworth Catholic District Sch    **Site:** Admin  
**Location:** #1001 : Hearing Room    **Floor:** 1  
**Survey Date:** 2017-09-08

**Building Name:** Father Kyran Kennedy Catholic Education Centre  
**Room #:**    **Area (sqft):** 0  
**Last Re-Assessment:** 2023-07-20

ASBESTOS																
System	Component	Material	Item	Covering	A*	V*	AP*	Good	Fair	Poor	Unit	Sample	Asbestos Type	Amount	Hazard	Friable
Ceiling		Texture Coat, (HWCDSD sample PARACEL 1920269)			C	Y		100(7)			%	V9000	Confirmed Asbestos		Confirmed Asbestos	F
Floor		Carpet			A	Y										
Structure	Beam	Wood			C	Y										
Wall		Wood, Wood Paneling			A	Y										

**Client:** Hamilton-Wentworth Catholic District Sch    **Site:** Admin  
**Location:** #1002 : Board Room    **Floor:** 1  
**Survey Date:** 2017-09-08

**Building Name:** Father Kyran Kennedy Catholic Education Centre  
**Room #:**    **Area (sqft):** 0  
**Last Re-Assessment:** 2023-07-20

ASBESTOS																
System	Component	Material	Item	Covering	A*	V*	AP*	Good	Fair	Poor	Unit	Sample	Asbestos Type	Amount	Hazard	Friable
Ceiling		Texture Coat, (HWCDSD sample PARACEL 1920269)			C	Y		100(7)			%	V9000	Confirmed Asbestos		Confirmed Asbestos	F
Floor		Carpet			A	Y										
Wall		Wood, Wood Paneling			A	Y										

**Client:** Hamilton-Wentworth Catholic District Sch    **Site:** Admin  
**Location:** #1003 : Kitchenette    **Floor:** 1  
**Survey Date:** 2017-09-08

**Building Name:** Father Kyran Kennedy Catholic Education Centre  
**Room #:**    **Area (sqft):** 0  
**Last Re-Assessment:** 2023-07-20

ASBESTOS																
System	Component	Material	Item	Covering	A*	V*	AP*	Good	Fair	Poor	Unit	Sample	Asbestos Type	Amount	Hazard	Friable
Ceiling	Acoustic Tile	Ceiling tiles (glue-on), 1x1 Fissured (previously sampled)			C	Y		1(7)			%	V9000	Confirmed Asbestos		Confirmed Asbestos	PF
Floor		Laminate			A	Y										
Floor		Mastic			D	N		100(7)			%	V9500	Presumed Asbestos		Presumed Asbestos	NF
Other	Sink	Mastic, Gold			A	N		1(7)			EA	V9500	Presumed Asbestos		Presumed Asbestos	NF
Wall		Plaster			A	Y		100			%	S0005A	None Detected	N.D.	None	

**Client:** Hamilton-Wentworth Catholic District Sch    **Site:** Admin  
**Location:** #1004 : Washroom    **Floor:** 1  
**Survey Date:** 2017-09-08

**Building Name:** Father Kyran Kennedy Catholic Education Centre  
**Room #:**    **Area (sqft):** 0  
**Last Re-Assessment:** 2023-07-20

ASBESTOS																
System	Component	Material	Item	Covering	A*	V*	AP*	Good	Fair	Poor	Unit	Sample	Asbestos Type	Amount	Hazard	Friable
Ceiling		Plaster			C	Y		100			%	V0005	None Detected	N.D.	None	
Floor		Terrazzo			A	Y										
Wall		Plaster			A	Y		100			%	V0005	None Detected	N.D.	None	

**Client:** Hamilton-Wentworth Catholic District Sch    **Site:** Admin  
**Location:** #1005 : Office    **Floor:** 1  
**Survey Date:** 2017-09-08

**Building Name:** Father Kyran Kennedy Catholic Education Centre  
**Room #:**    **Area (sqft):** 0  
**Last Re-Assessment:** 2023-07-20

ASBESTOS																
System	Component	Material	Item	Covering	A*	V*	AP*	Good	Fair	Poor	Unit	Sample	Asbestos Type	Amount	Hazard	Friable
Ceiling	Acoustic Tile	Ceiling Tiles (lay-in), 2x2 Short Fissure and Random Pinhole (date stamped 05/18/09)			C	Y		100			%	V0000	Non-Asbestos		None	
Floor		Carpet			A	Y										
Piping		Fibreglass	Insulation		C	Y										
Wall		Plaster			A	Y		100			%	V0005	None Detected	N.D.	None	

**Client:** Hamilton-Wentworth Catholic District Sch    **Site:** Admin  
**Location:** #1006 : Office    **Floor:** 1  
**Survey Date:** 2017-09-08

**Building Name:** Father Kyran Kennedy Catholic Education Centre  
**Room #:**    **Area (sqft):** 0  
**Last Re-Assessment:** 2023-07-20

ASBESTOS																
System	Component	Material	Item	Covering	A*	V*	AP*	Good	Fair	Poor	Unit	Sample	Asbestos Type	Amount	Hazard	Friable
Ceiling	Acoustic Tile	Ceiling Tiles (lay-in), 2x2 Short Fissure and Random Pinhole (date stamped 05/18/09)			C	Y		100			%	V0000	Non-Asbestos		None	
Floor		Carpet			A	Y										
Piping		Fibreglass			C	Y										
Wall		Plaster			A	Y		100			%	V0005	None Detected	N.D.	None	

**Client:** Hamilton-Wentworth Catholic District Sch    **Site:** Admin  
**Location:** #1007 : Office    **Floor:** 1  
**Survey Date:** 2017-09-08

**Building Name:** Father Kyran Kennedy Catholic Education Centre  
**Room #:**    **Area (sqft):** 0  
**Last Re-Assessment:** 2023-07-20

ASBESTOS																
System	Component	Material	Item	Covering	A*	V*	AP*	Good	Fair	Poor	Unit	Sample	Asbestos Type	Amount	Hazard	Friable
Ceiling	Acoustic Tile	Ceiling Tiles (lay-in), 2x2 Short Fissure and Random Pinhole (date stamped 05/18/09)			C	Y		100			%	V0000	Non-Asbestos		None	
Floor		Carpet			A	Y										
Piping		Fibreglass	Insulation		C	Y										
Wall		Plaster			A	Y		100			%	V0005	None Detected	N.D.	None	

**Client:** Hamilton-Wentworth Catholic District Sch    **Site:** Admin  
**Location:** #1008 : Office    **Floor:** 1  
**Survey Date:** 2017-09-08

**Building Name:** Father Kyran Kennedy Catholic Education Centre  
**Room #:**    **Area (sqft):** 0  
**Last Re-Assessment:** 2023-07-20

ASBESTOS																
System	Component	Material	Item	Covering	A*	V*	AP*	Good	Fair	Poor	Unit	Sample	Asbestos Type	Amount	Hazard	Friable
Ceiling	Acoustic Tile	Ceiling Tiles (lay-in), 2x2 Short Fissure and Random Pinhole (date stamped 05/18/09)			C	Y		100			%	V0000	Non-Asbestos		None	
Floor		Carpet			A	Y										
Piping		Fibreglass	Insulation		C	Y										
Wall		Plaster			A	Y		100			%	V0005	None Detected	N.D.	None	

**Client:** Hamilton-Wentworth Catholic District Sch    **Site:** Admin  
**Location:** #1009 : Womens Washroom    **Floor:** 1  
**Survey Date:** 2017-09-08

**Building Name:** Father Kyran Kennedy Catholic Education Centre  
**Room #:**    **Area (sqft):** 0  
**Last Re-Assessment:** 2023-07-20

ASBESTOS																
System	Component	Material	Item	Covering	A*	V*	AP*	Good	Fair	Poor	Unit	Sample	Asbestos Type	Amount	Hazard	Friable
Ceiling		Plaster			C	Y		100			%	V0005	None Detected	N.D.	None	
Floor		Terrazzo			A	Y										
Wall		Plaster			A	Y		100			%	S0005B	None Detected	N.D.	None	

**Client:** Hamilton-Wentworth Catholic District Sch    **Site:** Admin  
**Location:** #1010 : Mens Washroom    **Floor:** 1  
**Survey Date:** 2017-09-08

**Building Name:** Father Kyran Kennedy Catholic Education Centre  
**Room #:**    **Area (sqft):** 0  
**Last Re-Assessment:** 2023-07-20

ASBESTOS																
System	Component	Material	Item	Covering	A*	V*	AP*	Good	Fair	Poor	Unit	Sample	Asbestos Type	Amount	Hazard	Friable
Ceiling		Plaster			C	Y		100			%	V0005	None Detected	N.D.	None	
Floor		Terrazzo			A	Y										
Wall		Plaster			A	Y		100			%	V0005	None Detected	N.D.	None	

**Client:** Hamilton-Wentworth Catholic District Sch     **Site:** Admin  
**Location:** #1011 : Open Office Area     **Floor:** 1  
**Survey Date:** 2017-09-08

**Building Name:** Father Kyran Kennedy Catholic Education Centre  
**Room #:**  
**Last Re-Assessment:** 2023-07-20  
**Area (sqft):** 0

ASBESTOS																
System	Component	Material	Item	Covering	A*	V*	AP*	Good	Fair	Poor	Unit	Sample	Asbestos Type	Amount	Hazard	Friable
Ceiling	Acoustic Tile	Ceiling Tiles (lay-in), 2x2 Short Fissure and Random Pinhole (date stamped 05/18/09)			C	Y		100			%	V0000	Non-Asbestos		None	
Floor		Vinyl Floor Tile and Mastic, Beige with Light and Dark Streaks			A	Y		100(7)			%	V9500	Presumed Asbestos		Presumed Asbestos	NF
Piping		Fibreglass	Insulation		C	Y										
Wall		Wood, Wood Paneling			A	Y										
Wall		Plaster			A	Y		100			%	V0005	None Detected	N.D.	None	
Wall		Masonry			A	Y										

**Client:** Hamilton-Wentworth Catholic District Sch     **Site:** Admin  
**Location:** #1012 : Vault     **Floor:** 1  
**Survey Date:** 2017-09-08

**Building Name:** Father Kyran Kennedy Catholic Education Centre  
**Room #:**  
**Last Re-Assessment:** 2023-07-20  
**Area (sqft):** 0

ASBESTOS																
System	Component	Material	Item	Covering	A*	V*	AP*	Good	Fair	Poor	Unit	Sample	Asbestos Type	Amount	Hazard	Friable
Ceiling		Plaster			C	Y		100			%	V0005	None Detected	N.D.	None	
Floor		Vinyl Floor Tile and Mastic, 9x9 Beige with Brown Streak			A	Y		100(7)			%	V9500	Presumed Asbestos		Presumed Asbestos	NF
Wall		Plaster			A	Y		100			%	V0005	None Detected	N.D.	None	

**Client:** Hamilton-Wentworth Catholic District Sch    **Site:** Admin  
**Location:** #1013 : Office    **Floor:** 1  
**Survey Date:** 2017-09-08

**Building Name:** Father Kyran Kennedy Catholic Education Centre  
**Room #:**    **Area (sqft):** 0  
**Last Re-Assessment:** 2023-07-20

ASBESTOS																
System	Component	Material	Item	Covering	A*	V*	AP*	Good	Fair	Poor	Unit	Sample	Asbestos Type	Amount	Hazard	Friable
Ceiling	Acoustic Tile	Ceiling Tiles (lay-in), 2x2 Short Fissure and Random Pinhole (date stamped 05/18/09)			C	Y		100			%	V0000	Non-Asbestos		None	
Floor		Carpet			A	Y										
Piping		Fibreglass	Insulation		C	Y										
Wall		Plaster			A	Y		100			%	V0005	None Detected	N.D.	None	

**Client:** Hamilton-Wentworth Catholic District Sch    **Site:** Admin  
**Location:** #1014 : Office    **Floor:** 1  
**Survey Date:** 2017-09-08

**Building Name:** Father Kyran Kennedy Catholic Education Centre  
**Room #:**    **Area (sqft):** 0  
**Last Re-Assessment:** 2023-07-20

ASBESTOS																
System	Component	Material	Item	Covering	A*	V*	AP*	Good	Fair	Poor	Unit	Sample	Asbestos Type	Amount	Hazard	Friable
Ceiling	Acoustic Tile	Ceiling Tiles (lay-in), 2x2 Short Fissure and Random Pinhole (date stamped 05/18/09)			C	Y		100			%	V0000	Non-Asbestos		None	
Floor		Carpet			A	Y										
Piping		Fibreglass			C	Y										
Wall		Plaster			A	Y		100			%	V0005	None Detected	N.D.	None	

**Client:** Hamilton-Wentworth Catholic District Sch    **Site:** Admin  
**Location:** #1015 : Reception    **Floor:** 1  
**Survey Date:** 2017-09-08

**Building Name:** Father Kyran Kennedy Catholic Education Centre  
**Room #:**    **Area (sqft):** 0  
**Last Re-Assessment:** 2023-07-20

ASBESTOS																
System	Component	Material	Item	Covering	A*	V*	AP*	Good	Fair	Poor	Unit	Sample	Asbestos Type	Amount	Hazard	Friable
Ceiling	Acoustic Tile	Ceiling Tiles (lay-in), 2x2 Textured Pattern (previously sampled)			C	Y						V0000	Non-Asbestos		None	
Floor		Marble			A	Y										
Wall		Concrete (poured), Decorative Pebbled			A	Y										
Wall		Plaster			A	Y		100			%	V0005	None Detected	N.D.	None	

**Client:** Hamilton-Wentworth Catholic District Sch    **Site:** Admin  
**Location:** #1016 : Stairwell    **Floor:** 1  
**Survey Date:** 2017-09-08

**Building Name:** Father Kyran Kennedy Catholic Education Centre  
**Room #:**    **Area (sqft):** 0  
**Last Re-Assessment:** 2023-07-20

ASBESTOS																
System	Component	Material	Item	Covering	A*	V*	AP*	Good	Fair	Poor	Unit	Sample	Asbestos Type	Amount	Hazard	Friable
Ceiling	Acoustic Tile	Ceiling Tiles (lay-in), Textured Pattern (previously sampled)			C	Y						V0000	Non-Asbestos		None	
Floor		Marble			A	Y										
Wall		Plaster			A	Y		100			%	V0005	None Detected	N.D.	None	



**Client:** Hamilton-Wentworth Catholic District Sch    **Site:** Admin  
**Location:** #1017 : Corridor    **Floor:** 1  
**Survey Date:** 2017-09-08

**Building Name:** Father Kyran Kennedy Catholic Education Centre  
**Room #:**    **Area (sqft):** 0  
**Last Re-Assessment:** 2023-07-20

ASBESTOS																
System	Component	Material	Item	Covering	A*	V*	AP*	Good	Fair	Poor	Unit	Sample	Asbestos Type	Amount	Hazard	Friable
Ceiling	Acoustic Tile	Ceiling Tiles (lay-in), 2x2 Short Fissure and Random Pinhole (date stamped 05/18/09)			C	Y		100			%	V0000	Non-Asbestos		None	
Floor		Vinyl Floor Tile and Mastic, Beige with White and Grey Specks			A	Y		100(7)			%	V9500	Presumed Asbestos		Presumed Asbestos	NF
Floor		Vinyl Floor Tile and Mastic, Brown with Brown and Grey Specks			A	Y		100(7)			%	V9500	Presumed Asbestos		Presumed Asbestos	NF
Piping		Fibreglass	Insulation		C	Y										
Wall		Plaster			A	Y		100			%	V0005	None Detected	N.D.	None	

**Client:** Hamilton-Wentworth Catholic District Sch    **Site:** Admin  
**Location:** #2001 : Meeting Room    **Floor:** 2  
**Survey Date:** 2017-09-08

**Building Name:** Father Kyran Kennedy Catholic Education Centre  
**Room #:**    **Area (sqft):** 0  
**Last Re-Assessment:** 2023-07-20

ASBESTOS																
System	Component	Material	Item	Covering	A*	V*	AP*	Good	Fair	Poor	Unit	Sample	Asbestos Type	Amount	Hazard	Friable
Ceiling	Acoustic Tile	Ceiling Tiles (lay-in), 2x2 Short Fissure and Random Pinhole (date stamped 05/18/09)			C	Y						V0000	Non-Asbestos		None	
Floor		Carpet			A	Y										
Piping		Fibreglass	Insulation		C	Y										
Wall		Plaster			A	Y		100			%	V0005	None Detected	N.D.	None	

**Client:** Hamilton-Wentworth Catholic District Sch    **Site:** Admin  
**Location:** #2002 : Office    **Floor:** 2  
**Survey Date:** 2017-09-08

**Building Name:** Father Kyran Kennedy Catholic Education Centre  
**Room #:**    **Area (sqft):** 0  
**Last Re-Assessment:** 2023-07-20

ASBESTOS																
System	Component	Material	Item	Covering	A*	V*	AP*	Good	Fair	Poor	Unit	Sample	Asbestos Type	Amount	Hazard	Friable
Ceiling	Acoustic Tile	Ceiling Tiles (lay-in), 2x2 Short Fissure and Random Pinhole (date stamped 05/18/09)			C	Y						V0000	Non-Asbestos		None	
Floor		Carpet			A	Y										
Piping		Fibreglass			C	Y										
Wall		Plaster			A	Y		100			%	V0005	None Detected	N.D.	None	

**Client:** Hamilton-Wentworth Catholic District Sch    **Site:** Admin  
**Location:** #2003 : Office    **Floor:** 2  
**Survey Date:** 2017-09-08

**Building Name:** Father Kyran Kennedy Catholic Education Centre  
**Room #:**    **Area (sqft):** 0  
**Last Re-Assessment:** 2023-07-20

ASBESTOS																
System	Component	Material	Item	Covering	A*	V*	AP*	Good	Fair	Poor	Unit	Sample	Asbestos Type	Amount	Hazard	Friable
Ceiling	Acoustic Tile	Ceiling Tiles (lay-in), 2x2 Short Fissure and Random Pinhole (date stamped 05/18/09)			C	Y					%	V0000	Non-Asbestos		None	
Floor		Carpet			A	Y										
Piping		Fibreglass	Insulation		C	Y										
Wall		Plaster			A	Y		100			%	V0005	None Detected	N.D.	None	

**Client:** Hamilton-Wentworth Catholic District Sch    **Site:** Admin  
**Location:** #2004 : Office    **Floor:** 2  
**Survey Date:** 2017-09-08

**Building Name:** Father Kyran Kennedy Catholic Education Centre  
**Room #:**    **Area (sqft):** 0  
**Last Re-Assessment:** 2023-07-20

ASBESTOS																
System	Component	Material	Item	Covering	A*	V*	AP*	Good	Fair	Poor	Unit	Sample	Asbestos Type	Amount	Hazard	Friable
Ceiling	Acoustic Tile	Ceiling Tiles (lay-in), 2x2 Short Fissure and Random Pinhole (date stamped 05/18/09)			C	Y						V0000	Non-Asbestos		None	
Floor		Carpet			A	Y										
Piping		Fibreglass	Insulation		C	Y										
Wall		Drywall and joint compound			A	Y						V0006	None Detected	N.D.	None	
Wall		Plaster			A	Y		100			%	V0005	None Detected	N.D.	None	

**Client:** Hamilton-Wentworth Catholic District Sch    **Site:** Admin  
**Location:** #2005 : Office    **Floor:** 2  
**Survey Date:** 2017-09-08

**Building Name:** Father Kyran Kennedy Catholic Education Centre  
**Room #:**    **Area (sqft):** 0  
**Last Re-Assessment:** 2023-07-20

ASBESTOS																
System	Component	Material	Item	Covering	A*	V*	AP*	Good	Fair	Poor	Unit	Sample	Asbestos Type	Amount	Hazard	Friable
Ceiling	Acoustic Tile	Ceiling Tiles (lay-in), 2x2 Short Fissure and Random Pinhole (date stamped 05/18/09)			C	Y						V0000	Non-Asbestos		None	
Floor		Vinyl Floor Tile and Mastic, Pink Marble			A	Y		100(7)			%	V9500	Presumed Asbestos		Presumed Asbestos	NF
Piping		Fibreglass	Insulation		C	Y										
Wall		Drywall and joint compound			A	Y						V0006	None Detected	N.D.	None	
Wall		Plaster			A	Y		100			%	V0005	None Detected	N.D.	None	

**Client:** Hamilton-Wentworth Catholic District Sch    **Site:** Admin  
**Location:** #2006 : Copy Room    **Floor:** 2  
**Survey Date:** 2017-09-08

**Building Name:** Father Kyran Kennedy Catholic Education Centre  
**Room #:**    **Area (sqft):** 0  
**Last Re-Assessment:** 2023-07-20

ASBESTOS																
System	Component	Material	Item	Covering	A*	V*	AP*	Good	Fair	Poor	Unit	Sample	Asbestos Type	Amount	Hazard	Friable
Ceiling	Acoustic Tile	Ceiling Tiles (lay-in), 2x2 Short Fissure and Random Pinhole (date stamped 05/18/09)			C	Y						V0000	Non-Asbestos		None	
Floor		Vinyl Floor Tile and Mastic, Pink Marble			A	Y		100(7)			%	V9500	Presumed Asbestos		Presumed Asbestos	NF
Piping		Fibreglass	Insulation		C	Y										
Wall		Drywall and joint compound			A	Y						V0006	None Detected	N.D.	None	
Wall		Plaster			A	Y		100			%	V0005	None Detected	N.D.	None	

**Client:** Hamilton-Wentworth Catholic District Sch    **Site:** Admin  
**Location:** #2007 : Server Room    **Floor:** 2  
**Survey Date:** 2017-09-08

**Building Name:** Father Kyran Kennedy Catholic Education Centre  
**Room #:**    **Area (sqft):** 0  
**Last Re-Assessment:** 2023-07-20

ASBESTOS - NO ACCESS																
System	Component	Material	Item	Covering	A*	V*	AP*	Good	Fair	Poor	Unit	Sample	Asbestos Type	Amount	Hazard	Friable

No Access

**Client:** Hamilton-Wentworth Catholic District Sch    **Site:** Admin  
**Location:** #2008 : Office    **Floor:** 2  
**Survey Date:** 2017-09-08

**Building Name:** Father Kyran Kennedy Catholic Education Centre  
**Room #:**    **Area (sqft):** 0  
**Last Re-Assessment:** 2023-07-20

ASBESTOS																
System	Component	Material	Item	Covering	A*	V*	AP*	Good	Fair	Poor	Unit	Sample	Asbestos Type	Amount	Hazard	Friable
Ceiling	Acoustic Tile	Ceiling Tiles (lay-in), 2x2 Short Fissure and Random Pinhole (date stamped 05/18/09)			C	Y						V0000	Non-Asbestos		None	
Floor		Vinyl Floor Tile and Mastic, Pink Marble			A	Y		100(7)			%	V9500	Presumed Asbestos		Presumed Asbestos	NF
Piping		Fibreglass	Insulation		C	Y										
Wall		Drywall and joint compound			A	Y						V0006	None Detected	N.D.	None	
Wall		Plaster			A	Y		100			%	V0005	None Detected	N.D.	None	

**Client:** Hamilton-Wentworth Catholic District Sch    **Site:** Admin  
**Location:** #2009 : Meeting Room    **Floor:** 2  
**Survey Date:** 2017-09-08

**Building Name:** Father Kyran Kennedy Catholic Education Centre  
**Room #:**    **Area (sqft):** 0  
**Last Re-Assessment:** 2023-07-20

ASBESTOS																
System	Component	Material	Item	Covering	A*	V*	AP*	Good	Fair	Poor	Unit	Sample	Asbestos Type	Amount	Hazard	Friable
Ceiling	Acoustic Tile	Ceiling Tiles (lay-in), 2x2 Short Fissure and Random Pinhole (date stamped 05/18/09)			C	Y						V0000	Non-Asbestos		None	
Floor		Vinyl Floor Tile and Mastic, Pink Marble			A	Y		100(7)			%	V9500	Presumed Asbestos		Presumed Asbestos	NF
Piping		Fibreglass	Insulation		C	Y										
Wall		Drywall and joint compound			A	Y						V0006	None Detected	N.D.	None	
Wall		Plaster			A	Y		100			%	V0005	None Detected	N.D.	None	

**Client:** Hamilton-Wentworth Catholic District Sch    **Site:** Admin  
**Location:** #2010 : Office    **Floor:** 2  
**Survey Date:** 2017-09-08

**Building Name:** Father Kyran Kennedy Catholic Education Centre  
**Room #:**    **Area (sqft):** 0  
**Last Re-Assessment:** 2023-07-20

ASBESTOS																
System	Component	Material	Item	Covering	A*	V*	AP*	Good	Fair	Poor	Unit	Sample	Asbestos Type	Amount	Hazard	Friable
Ceiling	Acoustic Tile	Ceiling Tiles (lay-in), 2x2 Short Fissure and Random Pinhole (date stamped 05/18/09)			C	Y						V0000	Non-Asbestos		None	
Floor		Vinyl Floor Tile and Mastic, Pink Marble			A	Y		100(7)			%	V9500	Presumed Asbestos		Presumed Asbestos	NF
Piping		Fibreglass	Insulation		C	Y										
Wall		Drywall and joint compound			A	Y						V0006	None Detected	N.D.	None	
Wall		Plaster			A	Y		100			%	V0005	None Detected	N.D.	None	

**Client:** Hamilton-Wentworth Catholic District Sch    **Site:** Admin  
**Location:** #2011 : Office    **Floor:** 2  
**Survey Date:** 2017-09-08

**Building Name:** Father Kyran Kennedy Catholic Education Centre  
**Room #:**    **Area (sqft):** 0  
**Last Re-Assessment:** 2023-07-20

ASBESTOS																
System	Component	Material	Item	Covering	A*	V*	AP*	Good	Fair	Poor	Unit	Sample	Asbestos Type	Amount	Hazard	Friable
Ceiling	Acoustic Tile	Ceiling Tiles (lay-in), 2x2 Short Fissure and Random Pinhole (date stamped 05/18/09)			C	Y						V0000	Non-Asbestos		None	
Floor		Carpet			A	Y										
Piping		Fibreglass	Insulation		C	Y										
Wall		Drywall and joint compound			A	Y						V0006	None Detected	N.D.	None	
Wall		Plaster			A	Y		100			%	V0005	None Detected	N.D.	None	



**Client:** Hamilton-Wentworth Catholic District Sch    **Site:** Admin  
**Location:** #2014 : Office    **Floor:** 2  
**Survey Date:** 2017-09-08

**Building Name:** Father Kyran Kennedy Catholic Education Centre  
**Room #:**    **Area (sqft):** 0  
**Last Re-Assessment:** 2023-07-20

ASBESTOS																
System	Component	Material	Item	Covering	A*	V*	AP*	Good	Fair	Poor	Unit	Sample	Asbestos Type	Amount	Hazard	Friable
Ceiling	Acoustic Tile	Ceiling Tiles (lay-in), 2x2 Short Fissure and Random Pinhole (date stamped 05/18/09)			C	Y						V0000	Non-Asbestos		None	
Floor		Carpet			A	Y										
Piping		Fibreglass	Insulation		C	Y										
Wall		Drywall and joint compound			A	Y						V0006	None Detected	N.D.	None	
Wall		Plaster			A	Y		100				V0005	None Detected	N.D.	None	

**Client:** Hamilton-Wentworth Catholic District Sch    **Site:** Admin  
**Location:** #2015 : Office    **Floor:** 2  
**Survey Date:** 2017-09-08

**Building Name:** Father Kyran Kennedy Catholic Education Centre  
**Room #:**    **Area (sqft):** 0  
**Last Re-Assessment:** 2023-07-20

ASBESTOS																
System	Component	Material	Item	Covering	A*	V*	AP*	Good	Fair	Poor	Unit	Sample	Asbestos Type	Amount	Hazard	Friable
Ceiling	Acoustic Tile	Ceiling Tiles (lay-in), 2x2 Short Fissure and Random Pinhole (date stamped 05/18/09)			C	Y						V0000	Non-Asbestos		None	
Floor		Vinyl Floor Tile and Mastic, Pink Marble			A	Y		100(7)			%	V9500	Presumed Asbestos		Presumed Asbestos	NF
Piping		Fibreglass	Insulation		C	Y										
Wall		Drywall and joint compound			A	Y						V0006	None Detected	N.D.	None	
Wall		Plaster			A	Y		100				V0005	None Detected	N.D.	None	



**Client:** Hamilton-Wentworth Catholic District Sch    **Site:** Admin  
**Location:** #2016 : Office    **Floor:** 2  
**Survey Date:** 2017-09-08

**Building Name:** Father Kyran Kennedy Catholic Education Centre  
**Room #:**    **Area (sqft):** 0  
**Last Re-Assessment:** 2023-07-20

ASBESTOS																
System	Component	Material	Item	Covering	A*	V*	AP*	Good	Fair	Poor	Unit	Sample	Asbestos Type	Amount	Hazard	Friable
Ceiling	Acoustic Tile	Ceiling Tiles (lay-in), 2x2 Short Fissure and Random Pinhole (date stamped 05/18/09)			C	Y						V0000	Non-Asbestos		None	
Floor		Carpet			A	Y										
Piping		Fibreglass	Insulation		C	Y										
Wall		Drywall and joint compound			A	Y						S0006B	None Detected	N.D.	None	
Wall		Plaster			A	Y		100			%	V0005	None Detected	N.D.	None	

**Client:** Hamilton-Wentworth Catholic District Sch    **Site:** Admin  
**Location:** #2017 : Office    **Floor:** 2  
**Survey Date:** 2017-09-08

**Building Name:** Father Kyran Kennedy Catholic Education Centre  
**Room #:**    **Area (sqft):** 0  
**Last Re-Assessment:** 2023-07-20

ASBESTOS																
System	Component	Material	Item	Covering	A*	V*	AP*	Good	Fair	Poor	Unit	Sample	Asbestos Type	Amount	Hazard	Friable
Ceiling	Acoustic Tile	Ceiling Tiles (lay-in), 2x2 Short Fissure and Random Pinhole (date stamped 05/18/09)			C	Y						V0000	Non-Asbestos		None	
Floor		Carpet			A	Y										
Piping		Fibreglass	Insulation		C	Y										
Wall		Drywall and joint compound			A	Y						V0006	None Detected	N.D.	None	
Wall		Plaster			A	Y		100			%	V0005	None Detected	N.D.	None	

**Client:** Hamilton-Wentworth Catholic District Sch    **Site:** Admin  
**Location:** #2018 : Stairwell    **Floor:** 2  
**Survey Date:** 2017-09-08

**Building Name:** Father Kyran Kennedy Catholic Education Centre  
**Room #:**    **Area (sqft):** 0  
**Last Re-Assessment:** 2023-07-20

ASBESTOS																
System	Component	Material	Item	Covering	A*	V*	AP*	Good	Fair	Poor	Unit	Sample	Asbestos Type	Amount	Hazard	Friable
Ceiling	Acoustic Tile	Ceiling Tiles (lay-in), 2x2 Short Fissure and Random Pinhole (date stamped 05/18/09)			C	Y						V0000	Non-Asbestos		None	
Floor		Terrazzo			A	Y										
Wall		Plaster			A	Y		100			%	V0005	None Detected	N.D.	None	

**Client:** Hamilton-Wentworth Catholic District Sch    **Site:** Admin  
**Location:** #2019 : Womens Washroom    **Floor:** 2  
**Survey Date:** 2017-09-08

**Building Name:** Father Kyran Kennedy Catholic Education Centre  
**Room #:**    **Area (sqft):** 0  
**Last Re-Assessment:** 2023-07-20

ASBESTOS																
System	Component	Material	Item	Covering	A*	V*	AP*	Good	Fair	Poor	Unit	Sample	Asbestos Type	Amount	Hazard	Friable
Ceiling		Plaster			C	Y		100			%	S0005D	None Detected	N.D.	None	
Floor		Terrazzo			A	Y										
Wall		Plaster			A	Y		100			%	V0005	None Detected	N.D.	None	



**Client:** Hamilton-Wentworth Catholic District Sch    **Site:** Admin  
**Location:** #2022 : Storage Closet    **Floor:** 2  
**Survey Date:** 2017-09-08

**Building Name:** Father Kyran Kennedy Catholic Education Centre  
**Room #:**    **Area (sqft):** 0  
**Last Re-Assessment:** 2023-07-20

ASBESTOS																
System	Component	Material	Item	Covering	A*	V*	AP*	Good	Fair	Poor	Unit	Sample	Asbestos Type	Amount	Hazard	Friable
Ceiling		Plaster			C	Y		100			%	V0005	None Detected	N.D.	None	
Floor		Terrazzo			A	Y										
Wall		Plaster			A	Y		100			%	V0005	None Detected	N.D.	None	

**Client:** Hamilton-Wentworth Catholic District Sch    **Site:** Admin  
**Location:** #2023 : Open Office Area    **Floor:** 2  
**Survey Date:** 2017-09-08

**Building Name:** Father Kyran Kennedy Catholic Education Centre  
**Room #:**    **Area (sqft):** 0  
**Last Re-Assessment:** 2023-07-20

ASBESTOS																
System	Component	Material	Item	Covering	A*	V*	AP*	Good	Fair	Poor	Unit	Sample	Asbestos Type	Amount	Hazard	Friable
Ceiling	Acoustic Tile	Ceiling Tiles (lay-in), 2x2 Short Fissure and Random Pinhole (date stamped 05/18/09)			C	Y						V0000	Non-Asbestos		None	
Floor		Vinyl Floor Tile and Mastic, Dark Pink Marble			A	Y		100(7)			%	V9500	Presumed Asbestos		Presumed Asbestos	NF
Floor		Vinyl Floor Tile and Mastic, Pink Marble			A	Y		100(7)			%	V9500	Presumed Asbestos		Presumed Asbestos	NF
Piping		Fibreglass	Insulation		C	Y										
Wall		Wood, Wood Paneling			A	Y										
Wall		Plaster			A	Y		100			%	S0005C	None Detected	N.D.	None	

**Client:** Hamilton-Wentworth Catholic District Sch    **Site:** Admin  
**Location:** #2025 : Photography Room    **Floor:** 2  
**Survey Date:** 2017-09-08

**Building Name:** Father Kyran Kennedy Catholic Education Centre  
**Room #:**    **Area (sqft):** 0  
**Last Re-Assessment:** 2023-07-20

ASBESTOS																
System	Component	Material	Item	Covering	A*	V*	AP*	Good	Fair	Poor	Unit	Sample	Asbestos Type	Amount	Hazard	Friable
Ceiling	Acoustic Tile	Ceiling Tiles (lay-in), 24x48 pinhole and fleck (date stamp 2015)			C	Y						V0000	Non-Asbestos		None	
Floor		Vinyl Floor Tile and Mastic, 9x9 beige		Carpet	D	N		100(7)			%	V9500	Presumed Asbestos		Presumed Asbestos	NF
Floor		Carpet			A	Y										
Piping		Parging Cement	Fitting		C	N		3(7)			EA	V0009	Chrysotile	50-75%	Confirmed Asbestos	F
Wall		Drywall and joint compound			A	Y						S0006A	None Detected	N.D.	None	
Wall		Plaster			A	Y		100			%	V0005	None Detected	N.D.	None	

**Client:** Hamilton-Wentworth Catholic District Sch    **Site:** Admin  
**Location:** #3001 : Conference Room    **Floor:** 3  
**Survey Date:** 2017-09-08

**Building Name:** Father Kyran Kennedy Catholic Education Centre  
**Room #:**    **Area (sqft):** 0  
**Last Re-Assessment:** 2023-07-20

ASBESTOS																
System	Component	Material	Item	Covering	A*	V*	AP*	Good	Fair	Poor	Unit	Sample	Asbestos Type	Amount	Hazard	Friable
Ceiling	Acoustic Tile	Ceiling Tiles (lay-in), 2x2 Short Fissure and Random Pinhole (date stamped 05/18/09)			C	Y						V0000	Non-Asbestos		None	
Floor		Carpet			A	Y										
Piping		Fibreglass	Insulation		C	Y										
Wall		Drywall and joint compound			A	Y		100			%	S0008C	None Detected	N.D.	None	
Wall		Plaster			A	Y		100			%	V0005	None Detected	N.D.	None	

**Client:** Hamilton-Wentworth Catholic District Sch    **Site:** Admin  
**Location:** #3002 : Office    **Floor:** 3  
**Survey Date:** 2017-09-08

**Building Name:** Father Kyran Kennedy Catholic Education Centre  
**Room #:**    **Area (sqft):** 0  
**Last Re-Assessment:** 2023-07-20

ASBESTOS																
System	Component	Material	Item	Covering	A*	V*	AP*	Good	Fair	Poor	Unit	Sample	Asbestos Type	Amount	Hazard	Friable
Ceiling	Acoustic Tile	Ceiling Tiles (lay-in), 2x2 Short Fissure and Random Pinhole (date stamped 05/18/09)			C	Y						V0000	Non-Asbestos		None	
Floor		Vinyl Floor Tile and Mastic, Cream with Brown and White Specks			A	Y		100(7)			%	V9500	Presumed Asbestos		Presumed Asbestos	NF
Floor		Vinyl Floor Tile and Mastic, Brown with Multi-Brown Fleck			A	Y		100(7)			%	V9500	Presumed Asbestos		Presumed Asbestos	NF
Piping		Fibreglass	Insulation		C	Y										
Wall		Drywall and joint compound			A	Y		100			%	V0008	None Detected	N.D.	None	
Wall		Plaster			A	Y		100			%	V0005	None Detected	N.D.	None	

**Client:** Hamilton-Wentworth Catholic District Sch    **Site:** Admin  
**Location:** #3003 : Office    **Floor:** 3  
**Survey Date:** 2017-09-08

**Building Name:** Father Kyran Kennedy Catholic Education Centre  
**Room #:**    **Area (sqft):** 0  
**Last Re-Assessment:** 2023-07-20

ASBESTOS																
System	Component	Material	Item	Covering	A*	V*	AP*	Good	Fair	Poor	Unit	Sample	Asbestos Type	Amount	Hazard	Friable
Ceiling	Acoustic Tile	Ceiling Tiles (lay-in), 2x2 Short Fissure and Random Pinhole (date stamped 05/18/09)			C	Y		100			%	V0000	Non-Asbestos		None	
Floor		Vinyl Floor Tile and Mastic, Cream with Brown and White Specks			A	Y		100(7)			%	V9500	Presumed Asbestos		Presumed Asbestos	NF
Floor		Vinyl Floor Tile and Mastic, Brown with Multi-Brown Fleck			A	Y		100(7)			%	V9500	Presumed Asbestos		Presumed Asbestos	NF
Piping		Fibreglass	Insulation		C	Y										
Wall		Drywall and joint compound			A	Y		100			%	V0008	None Detected	N.D.	None	
Wall		Plaster			A	Y		100			%	V0005	None Detected	N.D.	None	

**Client:** Hamilton-Wentworth Catholic District Sch    **Site:** Admin  
**Location:** #3004 : Chapel    **Floor:** 3  
**Survey Date:** 2017-09-08

**Building Name:** Father Kyran Kennedy Catholic Education Centre  
**Room #:**    **Area (sqft):** 0  
**Last Re-Assessment:** 2023-07-20

ASBESTOS																
System	Component	Material	Item	Covering	A*	V*	AP*	Good	Fair	Poor	Unit	Sample	Asbestos Type	Amount	Hazard	Friable
Ceiling	Acoustic Tile	Ceiling Tiles (lay-in), 2x2 Short Fissure and Random Pinhole (date stamped 05/18/09)			C	Y						V0000	Non-Asbestos		None	
Floor		Carpet			A	Y										
Piping		Fibreglass	Insulation		C	Y										
Wall		Drywall and joint compound			A	Y		100			%	V0008	None Detected	N.D.	None	
Wall		Plaster			A	Y		100			%	V0005	None Detected	N.D.	None	
Wall		Texture Coat			A	Y		100			%	S0007ABC	None Detected	N.D.	None	

**Client:** Hamilton-Wentworth Catholic District Sch    **Site:** Admin  
**Location:** #3005 : Reception    **Floor:** 3  
**Survey Date:** 2017-09-08

**Building Name:** Father Kyran Kennedy Catholic Education Centre  
**Room #:**    **Area (sqft):** 0  
**Last Re-Assessment:** 2023-07-20

ASBESTOS																
System	Component	Material	Item	Covering	A*	V*	AP*	Good	Fair	Poor	Unit	Sample	Asbestos Type	Amount	Hazard	Friable
Ceiling	Acoustic Tile	Ceiling Tiles (lay-in), 2x2 Textured Pattern (previously sampled)			C	Y						V0000	Non-Asbestos		None	
Floor		Carpet			A	Y										
Piping		Fibreglass	Insulation		C	Y										
Wall		Drywall and joint compound			A	Y		100			%	S0008B	None Detected	N.D.	None	
Wall		Plaster			A	Y		100			%	V0005	None Detected	N.D.	None	

**Client:** Hamilton-Wentworth Catholic District Sch    **Site:** Admin  
**Location:** #3006 : Directors Office    **Floor:** 3  
**Survey Date:** 2017-09-08

**Building Name:** Father Kyran Kennedy Catholic Education Centre  
**Room #:**    **Area (sqft):** 0  
**Last Re-Assessment:** 2023-07-20

ASBESTOS																
System	Component	Material	Item	Covering	A*	V*	AP*	Good	Fair	Poor	Unit	Sample	Asbestos Type	Amount	Hazard	Friable
Ceiling	Acoustic Tile	Ceiling Tiles (lay-in), 2x2 Textured Pattern (previously sampled)			C	Y						V0000	Non-Asbestos		None	
Floor		Carpet			A	Y										
Piping		Fibreglass	Insulation		C	Y										
Wall		Drywall and joint compound			A	Y		100			%	V0008	None Detected	N.D.	None	
Wall		Plaster			A	Y		100			%	V0005	None Detected	N.D.	None	

**Client:** Hamilton-Wentworth Catholic District Sch    **Site:** Admin  
**Location:** #3007 : Meeting Room    **Floor:** 3  
**Survey Date:** 2017-09-08

**Building Name:** Father Kyran Kennedy Catholic Education Centre  
**Room #:**    **Area (sqft):** 0  
**Last Re-Assessment:** 2023-07-20

ASBESTOS																
System	Component	Material	Item	Covering	A*	V*	AP*	Good	Fair	Poor	Unit	Sample	Asbestos Type	Amount	Hazard	Friable
Ceiling	Acoustic Tile	Ceiling Tiles (lay-in), 2x2 Textured Pattern (previously sampled)			C	Y						V0000	Non-Asbestos		None	
Floor		Carpet			A	Y										
Piping		Fibreglass	Insulation		C	Y										
Wall		Drywall and joint compound			A	Y		100			%	V0008	None Detected	N.D.	None	
Wall		Plaster			A	Y		100			%	V0005	None Detected	N.D.	None	



**Client:** Hamilton-Wentworth Catholic District Sch    **Site:** Admin  
**Location:** #3008 : Mens Washroom    **Floor:** 3  
**Survey Date:** 2017-09-08

**Building Name:** Father Kyran Kennedy Catholic Education Centre  
**Room #:**    **Area (sqft):** 0  
**Last Re-Assessment:** 2023-07-20

ASBESTOS																
System	Component	Material	Item	Covering	A*	V*	AP*	Good	Fair	Poor	Unit	Sample	Asbestos Type	Amount	Hazard	Friable
Ceiling		Plaster			C	Y		100			%	V0005	None Detected	N.D.	None	
Floor		Terrazzo			A	Y										
Wall		Plaster			A	Y		100			%	S0005G	None Detected	N.D.	None	

**Client:** Hamilton-Wentworth Catholic District Sch    **Site:** Admin  
**Location:** #3009 : Custodian Room    **Floor:** 3  
**Survey Date:** 2017-09-08

**Building Name:** Father Kyran Kennedy Catholic Education Centre  
**Room #:**    **Area (sqft):** 0  
**Last Re-Assessment:** 2023-07-20

ASBESTOS																
System	Component	Material	Item	Covering	A*	V*	AP*	Good	Fair	Poor	Unit	Sample	Asbestos Type	Amount	Hazard	Friable
Ceiling	Skylight	Metal			C	Y										
Floor		Vinyl Floor Tile and Mastic, Cream with Brown and White Speck			A	Y		100(7)			%	V9500	Presumed Asbestos		Presumed Asbestos	NF
Floor		Vinyl Floor Tile and Mastic, Brown with Multi-Brown Fleck			A	Y		100(7)			%	V9500	Presumed Asbestos		Presumed Asbestos	NF
Wall		Drywall and joint compound			A	Y		100			%	V0008	None Detected	N.D.	None	
Wall		Plaster			A	Y		100			%	V0005	None Detected	N.D.	None	

**Client:** Hamilton-Wentworth Catholic District Sch    **Site:** Admin  
**Location:** #3010 : Womens Washroom    **Floor:** 3  
**Survey Date:** 2017-09-08

**Building Name:** Father Kyran Kennedy Catholic Education Centre  
**Room #:**    **Area (sqft):** 0  
**Last Re-Assessment:** 2023-07-20

ASBESTOS																
System	Component	Material	Item	Covering	A*	V*	AP*	Good	Fair	Poor	Unit	Sample	Asbestos Type	Amount	Hazard	Friable
Ceiling	Acoustic Tile	Ceiling tiles (glue-on), 1x1 Fissured (previously sampled)			C	Y		100(7)			%	V9000	Confirmed Asbestos		Confirmed Asbestos	PF
Floor		Terrazzo			A	Y										
Wall		Plaster			A	Y		100			%	S0005E	None Detected	N.D.	None	

**Client:** Hamilton-Wentworth Catholic District Sch    **Site:** Admin  
**Location:** #3011 : Stairwell    **Floor:** 3  
**Survey Date:** 2017-09-08

**Building Name:** Father Kyran Kennedy Catholic Education Centre  
**Room #:**    **Area (sqft):** 0  
**Last Re-Assessment:** 2023-07-20

ASBESTOS																
System	Component	Material	Item	Covering	A*	V*	AP*	Good	Fair	Poor	Unit	Sample	Asbestos Type	Amount	Hazard	Friable
Ceiling	Acoustic Tile	Ceiling Tiles (lay-in), 2x2 Short Fissure and Random Pinhole (date stamped 05/18/09)			C	Y						V0000	Non-Asbestos		None	
Floor		Terrazzo			A	Y										
Wall		Plaster			A	Y		100			%	V0005	None Detected	N.D.	None	

**Client:** Hamilton-Wentworth Catholic District Sch    **Site:** Admin  
**Location:** #3012 : Open Office Area    **Floor:** 3  
**Survey Date:** 2017-09-08

**Building Name:** Father Kyran Kennedy Catholic Education Centre  
**Room #:**    **Area (sqft):** 0  
**Last Re-Assessment:** 2023-07-20

ASBESTOS																
System	Component	Material	Item	Covering	A*	V*	AP*	Good	Fair	Poor	Unit	Sample	Asbestos Type	Amount	Hazard	Friable
Ceiling	Acoustic Tile	Ceiling Tiles (lay-in), 2x2 Short Fissure and Random Pinhole (date stamped 05/18/09)			C	Y						V0000	Non-Asbestos		None	
Floor		Vinyl Floor Tile and Mastic, Cream with Brown and White Specks			A	Y		100(7)			%	V9500	Presumed Asbestos		Presumed Asbestos	NF
Floor		Vinyl Floor Tile and Mastic, Brown with Multi-Brown Fleck			A	Y		100(7)			%	V9500	Presumed Asbestos		Presumed Asbestos	NF
Piping		Fibreglass	Insulation		C	Y										
Wall		Wood, Wood Paneling			A	Y										
Wall		Drywall and joint compound			A	Y		100			%	V0008	None Detected	N.D.	None	
Wall		Plaster			A	Y		100			%	V0005	None Detected	N.D.	None	

**Client:** Hamilton-Wentworth Catholic District Sch    **Site:** Admin  
**Location:** #3013 : Office    **Floor:** 3  
**Survey Date:** 2017-09-08

**Building Name:** Father Kyran Kennedy Catholic Education Centre  
**Room #:**    **Area (sqft):** 0  
**Last Re-Assessment:** 2023-07-20

ASBESTOS																
System	Component	Material	Item	Covering	A*	V*	AP*	Good	Fair	Poor	Unit	Sample	Asbestos Type	Amount	Hazard	Friable
Ceiling	Acoustic Tile	Ceiling Tiles (lay-in), 2x2 Short Fissure and Random Pinhole (date stamped 05/18/19)			C	Y					%	V0000	Non-Asbestos		None	
Floor		Carpet			A	Y										
Piping		Fibreglass	Insulation		C	Y										
Wall		Drywall and joint compound			A	Y		100			%	V0008	None Detected	N.D.	None	
Wall		Plaster			A	Y		100			%	S0005F	None Detected	N.D.	None	

**Client:** Hamilton-Wentworth Catholic District Sch    **Site:** Admin  
**Location:** #3014 : Office    **Floor:** 3  
**Survey Date:** 2017-09-08

**Building Name:** Father Kyran Kennedy Catholic Education Centre  
**Room #:**    **Area (sqft):** 0  
**Last Re-Assessment:** 2023-07-20

ASBESTOS																
System	Component	Material	Item	Covering	A*	V*	AP*	Good	Fair	Poor	Unit	Sample	Asbestos Type	Amount	Hazard	Friable
Ceiling	Acoustic Tile	Ceiling Tiles (lay-in), 2x2 Short Fissure and Random Pinhole (date stamped 05/18/09)			C	Y					%	V0000	Non-Asbestos		None	
Floor		Vinyl Floor Tile and Mastic, Cream with Brown and White Specks			A	Y		100(7)			%	V9500	Presumed Asbestos		Presumed Asbestos	NF
Floor		Vinyl Floor Tile and Mastic, Brown with Multi-Brown Fleck			A	Y		100(7)			%	V9500	Presumed Asbestos		Presumed Asbestos	NF
Piping		Fibreglass	Insulation		C	Y										
Wall		Drywall and joint compound			A	Y		100			%	V0008	None Detected	N.D.	None	
Wall		Plaster			A	Y		100			%	V0005	None Detected	N.D.	None	

**Client:** Hamilton-Wentworth Catholic District Sch    **Site:** Admin  
**Location:** #3015 : Office    **Floor:** 3  
**Survey Date:** 2017-09-08

**Building Name:** Father Kyran Kennedy Catholic Education Centre  
**Room #:**    **Area (sqft):** 0  
**Last Re-Assessment:** 2023-07-20

ASBESTOS																
System	Component	Material	Item	Covering	A*	V*	AP*	Good	Fair	Poor	Unit	Sample	Asbestos Type	Amount	Hazard	Friable
Ceiling	Acoustic Tile	Ceiling Tiles (lay-in), 2x2 Short Fissure and Random Pinhole (date stamped 05/18/09)			C	Y						V0000	Non-Asbestos		None	
Floor		Vinyl Floor Tile and Mastic, Cream with Brown and White Specks			A	Y		100(7)			%	V9500	Presumed Asbestos		Presumed Asbestos	NF
Floor		Vinyl Floor Tile and Mastic, Brown with Multi-Brown Fleck			A	Y		100(7)			%	V9500	Presumed Asbestos		Presumed Asbestos	NF
Piping		Fibreglass	Insulation		C	Y										
Wall		Drywall and joint compound			A	Y		100			%	S0008A	None Detected	N.D.	None	
Wall		Plaster			A	Y		100			%	S0005	None Detected	N.D.	None	

**Client:** Hamilton-Wentworth Catholic District Sch    **Site:** Admin  
**Location:** #3016 : File Room    **Floor:** 3  
**Survey Date:** 2017-09-08

**Building Name:** Father Kyran Kennedy Catholic Education Centre  
**Room #:**    **Area (sqft):** 0  
**Last Re-Assessment:** 2023-07-20

ASBESTOS																
System	Component	Material	Item	Covering	A*	V*	AP*	Good	Fair	Poor	Unit	Sample	Asbestos Type	Amount	Hazard	Friable
Ceiling	Acoustic Tile	Ceiling Tiles (lay-in), 2x2 Short Fissure and Random Pinhole (date stamped 05/18/09)			C	Y						V0000	Non-Asbestos		None	
Floor		Vinyl Floor Tile and Mastic, Cream with Brown and White Specks			A	Y		100(7)			%	V9500	Presumed Asbestos		Presumed Asbestos	NF
Floor		Vinyl Floor Tile and Mastic, Brown with Multi-Brown Fleck			A	Y		100(7)			%	V9500	Presumed Asbestos		Presumed Asbestos	NF
Piping		Fibreglass	Insulation		C	Y										
Wall		Drywall and joint compound			A	Y		100			%	V0008	None Detected	N.D.	None	
Wall		Plaster			A	Y		100			%	V0005	None Detected	N.D.	None	

**Client:** Hamilton-Wentworth Catholic District Sch    **Site:** Admin  
**Location:** #3017 : Office    **Floor:** 3  
**Survey Date:** 2017-09-08

**Building Name:** Father Kyran Kennedy Catholic Education Centre  
**Room #:**    **Area (sqft):** 0  
**Last Re-Assessment:** 2023-07-20

ASBESTOS																
System	Component	Material	Item	Covering	A*	V*	AP*	Good	Fair	Poor	Unit	Sample	Asbestos Type	Amount	Hazard	Friable
Ceiling	Acoustic Tile	Ceiling Tiles (lay-in), 2x2 Short Fissure and Random Pinhole (date stamped 05/18/09)			C	Y						V0000	Non-Asbestos		None	
Floor		Vinyl Floor Tile and Mastic, Cream with Brown and White Specks			A	Y		100(7)			%	V9500	Presumed Asbestos		Presumed Asbestos	NF
Floor		Vinyl Floor Tile and Mastic, Brown with Multi-Brown Fleck			A	Y		100(7)			%	V9500	Presumed Asbestos		Presumed Asbestos	NF
Piping		Fibreglass	Insulation		C	Y										
Wall		Drywall and joint compound			A	Y		100			%	V0008	None Detected	N.D.	None	
Wall		Plaster			A	Y		100			%	V0005	None Detected	N.D.	None	

**Client:** Hamilton-Wentworth Catholic District Sch    **Site:** Admin  
**Location:** #3018 : Office    **Floor:** 3  
**Survey Date:** 2017-09-08

**Building Name:** Father Kyran Kennedy Catholic Education Centre  
**Room #:**    **Area (sqft):** 0  
**Last Re-Assessment:** 2023-07-20

ASBESTOS																
System	Component	Material	Item	Covering	A*	V*	AP*	Good	Fair	Poor	Unit	Sample	Asbestos Type	Amount	Hazard	Friable
Ceiling	Acoustic Tile	Ceiling Tiles (lay-in), 2x2 Short Fissure and Random Pinhole (date stamped 05/18/09)			C	Y		100			%	V0000	Non-Asbestos		None	
Floor		Vinyl Floor Tile and Mastic, Cream with Brown and White Specks			A	Y		100(7)			%	V9500	Presumed Asbestos		Presumed Asbestos	NF
Floor		Vinyl Floor Tile and Mastic, Brown with Multi-Brown Fleck			A	Y		100(7)			%	V9500	Presumed Asbestos		Presumed Asbestos	NF
Piping		Fibreglass	Insulation		C	Y										
Wall		Drywall and joint compound			A	Y		100			%	V0008	None Detected	N.D.	None	
Wall		Plaster			A	Y		100			%	V0005	None Detected	N.D.	None	

**Client:** Hamilton-Wentworth Catholic District Sch    **Site:** Admin  
**Location:** #3019 : Staff Room    **Floor:** 3  
**Survey Date:** 2017-09-08

**Building Name:** Father Kyran Kennedy Catholic Education Centre  
**Room #:**    **Area (sqft):** 0  
**Last Re-Assessment:** 2023-07-20

ASBESTOS																
System	Component	Material	Item	Covering	A*	V*	AP*	Good	Fair	Poor	Unit	Sample	Asbestos Type	Amount	Hazard	Friable
Ceiling	Acoustic Tile	Ceiling Tiles (lay-in), 2x2 Short Fissure and Random Pinhole (date stamped 05/18/09)			C	Y						V0000	Non-Asbestos		None	
Floor		Vinyl Floor Tile and Mastic, Cream with Brown and White Specks			A	Y		100(7)			%	V9500	Presumed Asbestos		Presumed Asbestos	NF
Floor		Vinyl Floor Tile and Mastic, Brown with Multi-Brown Fleck			A	Y		100(7)			%	V9500	Presumed Asbestos		Presumed Asbestos	NF
Piping		Fibreglass	Insulation		C	Y										
Wall		Drywall and joint compound			A	Y		100			%	V0008	None Detected	N.D.	None	
Wall		Plaster			A	Y		100			%	V0005	None Detected	N.D.	None	

## Legend:


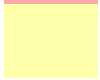
Sample number		Units		Other	
S####	Asbestos sample collected	SF	Square feet	A	Access
V####	Material visually similar to numbered sample collected	LF	Linear feet	V	Visible
V0000	Known non-asbestos material	EA	Each	AP	Air Plenum
V9000	Visually identified as an asbestos material	%	Percentage	F	Friable material
V9500	Material is presumed to be an asbestos material			NF	Non Friable material
				PF	Potentially Friable material

Access	
A	Accessible to all building occupants
B	Accessible to maintenance and operations staff without a ladder
C	Accessible to maintenance and operations staff with a ladder. Also rarely entered, locked areas
D	Not normally accessible

Condition	
Good	No visible damage or deterioration
Fair	Minor, repairable damage, cracking, delamination or deterioration
Poor	Irreparable damage or deterioration with exposed and missing material

Visible	
Y	The material is visible when standing on the floor of the room, without the removal or opening of other building components (e.g. ceiling tiles or access panels).
N	The material is not visible to view when standing on the floor of the room and requires the removal of a building component (e.g. ceilings tiles or access panels) to view and access. Includes rarely entered crawlspaces, attic spaces, etc. Observations will be limited to the extent visible from the access points.

Air Plenum	
Yes or No	The material is in a return air plenum or in a direct airstream or there is evidence of air erosion (e.g. duct for heating or cooling blowing directly on or across an ACM). This field is only completed where Air Plenum consideration is required by regulation.

Colour Coding	
	The material is known to contain regulated concentrations of asbestos; either by analytical results or visible identification (use of the V9000 code).
	The material is presumed to contain asbestos; based on visual appearances; typically a material known to historically contain asbestos; however, not sampled due to limited access or the destructive nature of the sampling.

Action					
(1)	Clean up of ACM Debris	(2)	Precautions for Access Which may Disturb ACM Debris	(3)	ACM removal
(4)	Precautions for Work Which may Disturb ACM in Poor Condition	(5)	Proactive ACM removal (Minimum repair required for fair condition)	(6)	ACM repair
(7)	Management program and surveillance				